
Container positioning for inspection

COHAOR

CONTAINER SPECIAL HANDLING MESSAGE

<!Fòrum telemàtic>

GUIDELINE FOR THE EDISIMPLEX
D00B COHAOR MESSAGE

Version 1.3

Message:	COHAOR
Version:	1.3
Date:	May 2009
Source:	<i>Portic Barcelona</i>

TABLE OF CONTENTS

GENERAL INTRODUCTION.....	3
CHOREOGRAPHY.....	5
STATUS INDICATORS AND USAGE INDICATORS.....	7

GENERAL INTRODUCTION

FORMAL DEFINITION

COHAOR: "Order to perform a specified special handling and/or service on containers. This message is part of a total set of container-related messages. These messages serve to facilitate the intermodal handling of containers by streamlining the information exchange. The business scenario for the container messages is clarified in a separate document, called: 'Guide to the scenario of EDIFACT container messages'."

The 'Guide to the scenario of the EDIFACT container messages' has been published by ITIGG under the title "Guide to the UN/EDIFACT Container Messages" (Document reference JM4/ITIGG/96.103/v.12).

CLARIFICATION

The COHAOR message is an order to perform specified special handling and/or services on items of transport equipment.

It is intended to be used in conjunction with a release order message - either a COPARN (empty container release) or COREOR (full container release) - in which case it would usually follow the release order, where the container in question had already been identified.

The COHAOR message contains more detailed specific instructions for special handling and/or servicing of the container.

UN/EDIFACT DIRECTORY REFERENCE

This document is based on the UN/EDIFACT D00B directory.

CHANGE CONTROL

Version 1.3 is the first public version of this guide

CHOREOGRAPHY

This message could be interchanged in two different scenarios. The first one is an scenario where the Positioning Coordinator Service (SCPP) manages the resources needed for the inspections and assign the dates and hours for those inspections. That happens when the inspection is executed at the Border Inspection Service (BIP or PIF in Spanish) or when it is realized at the Non Intrusive Inspection (NII) area of the port.

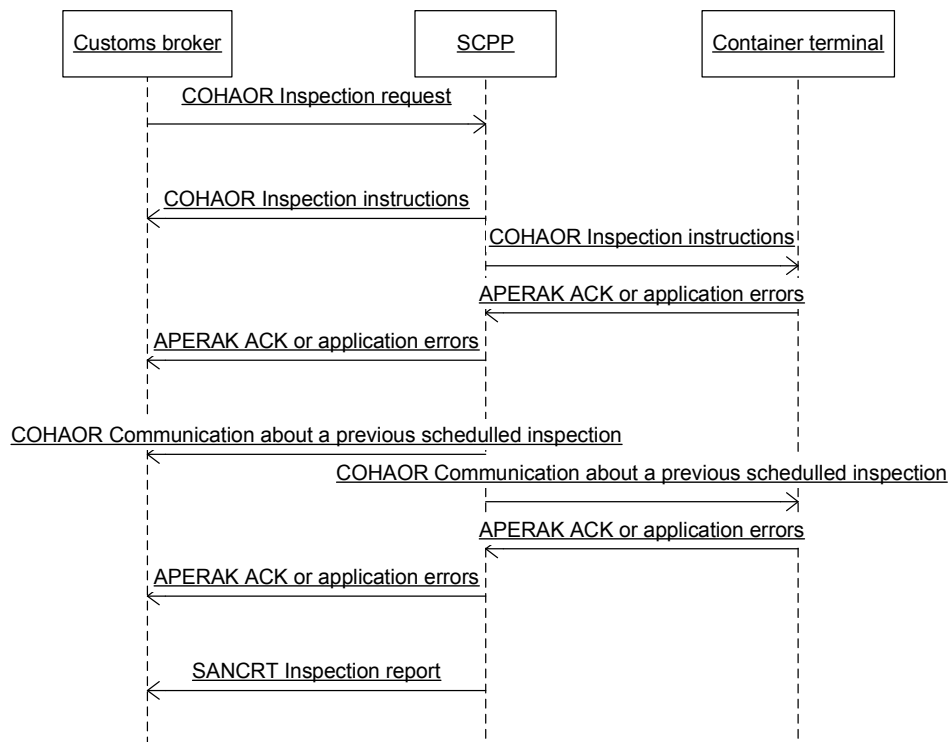


Fig. 1 Inspection at the Border Inspection Post or at the Non Intrusive Inspection area

In this scenario, the customs broker request for an inspection to the SCPP (COHAOR message with code “292” at DE1001) and the SCPP assigns some resources and a date for the inspection (COHAOR message with code “845” at DE1001). A copy of this message is sent to the container terminal (COHAOR message with code “845” at DE1001) that can acknowledge the reception of this message or can answer with an error response if the container will not be at the terminal at the specified date (APERAK message). The SCPP will forward this message to the customs broker.

If the SCPP knows that the resources will not be available at the given date, the SCPP will send a message to the customs broker proposing a new date (COHAOR message with code “846” at DE1001) and must also send a copy to the container terminal (COHAOR message with code “846” at DE1001).

When the inspection has finalized, a message will be sent from the SCPP to the custom broker notifying this event (SANCRT message).

The second scenario is when the inspection is carried in a specific area of the container terminal yard. In this scenario the container terminal manages the resources needed for the inspections and assign the dates and hours for those inspections. The Coordination Inspection Service must receive copy of all the messages interchanged.

In this scenario, the customs broker request for an inspection to the shipping agent (COHAOR message with code “292” at DE1001) and the shipping agent relays this message to the container terminal (COHAOR message with code “292” at DE1001). The customs broker must also send a copy of this message to the SCPP (COHAOR message with code “292” at DE1001).

The container terminal assigns some resources and send a message to the shipping agent with the date for the inspection (COHAOR message with code “845” at DE1001). It may not accept the request for inspection if the container is not or will not be at the terminal (COHAOR message with code “845” at DE1001 and code “27” at DE1225). The shipping agent must send a copy of this message to the customs broker (COHAOR message with code “845” at DE1001) and he also must send a copy to the SCPP (COHAOR message with code “845” at DE1001).

When the container terminal knows that, at the given date, the container will not be positioned at the inspection area, it must send a message to the customs broker proposing a new date (COHAOR message with code “846” at DE1001) and must also sent a copy to the SCPP (COHAOR message with code “846” at DE1001).

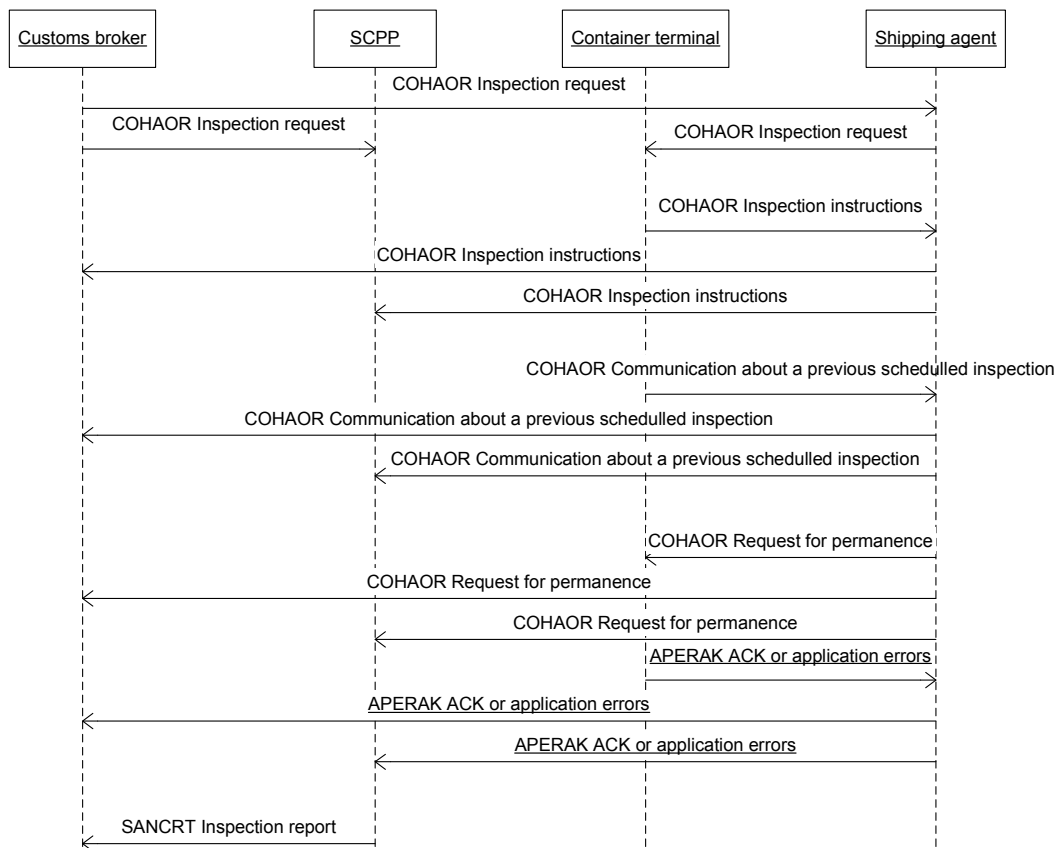


Fig. 2 Inspection at a specific area of the container terminal

For a positioned container, if it has not been possible to inspect during the day, the shipping agent can request for the permanence of the container at the inspection area (COHAOR message with code “847” at DE1001). The container terminal may acknowledge the reception of this message or may reject this operation when it will not have the resources for doing it (APERAK message). The container terminal will forward this message to the customs broker and the SCPP.

When the inspection has finalized, a message will be sent from the SCPP to the custom broker notifying the event (SANCRT message).

STATUS INDICATORS AND USAGE INDICATORS

Status Indicators

Status Indicators (M and C) form part of the UN/EDIFACT standard and indicate a minimum requirement to fulfil the needs of the message structure.

The Status Indicators are:-

<i>Value</i>	<i>Description</i>
M	Mandatory

This entity must appear in all messages. Shown as Usage Indicator "M" in Implementation Guidelines.

C	Conditional
---	-------------

This entity is used by agreement between the parties to the transaction.

A 'Conditional' Status Indicator may be represented by a supporting Usage Indicator which is either R, O, D or X (see below)

Usage Indicators

Throughout this document reference is made to indicators (M, R, D, O and X) which are shown adjacent to data items and which dictate for the particular message or set thereof the agreed usage of the data items or entities.

Set out below are the indicators and their respective uses:-

<i>Value</i>	<i>Description</i>
M	Mandatory

Indicates that this item is mandatory in the message.

R	Required
---	----------

Indicates that this entity must be sent in this implementation.

D	Dependent
---	-----------

Indicates that the use of the entity depends upon a well-defined condition or set of conditions. These conditions must be clearly specified in the relevant implementation guideline.

O	Optional
---	----------

Indicates that this entity is at the need or discretion of the sender of the message.

X	Not Used
---	----------

Indicates that the entity is not to be used in this message implementation.

Where an element within a composite is marked "M" or "R", but the composite has been marked "O" or "D", this indicates that the element must always be transmitted only if the composite is used.

Temporary codes

In this implementation there are used some codes that are not included in the UNCL. When those codes are used, they are between the “[“ and the “]” characters. For example, ABT is a valid code for DE1153 (according to UNCL) and [SOF] is a temporary code.

SEGMENTS

Structure of the message and correspondance with the EDIFACT segments

HEADER SECTION

ENV001 UNB REQUIRED

ENV001^Sender ID^Receiver ID

Example: ENV001^ESA43446522^ESA61961488

- Sender ID Mandatory an..35

Identification of the sender of the document, coded. Composed by 2 letter country code plus the NIF of the company that sends the document. For example ESA61961488.

- Receiver ID Mandatory an..35

Identification of the receiver of the document, coded. Composed by 2 letter country code plus the NIF of the company receiver of the document. For example ESA61961488.

COHAOR001 UNH REQUIRED

COHAOR001^MESSAGE REFERENCE NUMBER^COHAOR^D^00B^UN

Example: COHAOR001^1^COHAOR^D^00B^UN

The COHAOR001 segment must always be sent.

M	0062	MESSAGE REFERENCE NUMBER	M an..14
R		<i>Message Reference Number</i>	

COHAOR002 BGM REQUIRED

COHAOR002^DOCUMENT/MESSAGE NAME^DOCUMENT/MESSAGE NUMBER^MESSAGE FUNCTION, CODED

Example: COHAOR002^292^DOC1234^9

To indicate the type and function of a message and to transmit the identifying number.

The COHAOR002 segment must always be sent.

R	C002	DOCUMENT/MESSAGE NAME	++C
R	1001	Document/message name, coded	C an..3
D		292 <i>Inspection request</i>	
		<i>A message requesting a party to inspect items.</i>	
D		[845] <i>Inspection instruction</i>	
		<i>A message notifying a party from the assigned instructions for an inspection.</i>	
D		[846] <i>Communication about a previous scheduled inspection</i>	
		<i>A message from the party in charge of the management of the positioning for inspection giving new details for the scheduled inspection.</i>	
D		[847] <i>Request for permanence at the inspection area</i>	
		<i>A message from the shipping agent to the terminal requesting the maintenance of the equipment at the inspection area of the terminal.</i>	

R	1004	DOCUMENT/MESSAGE NUMBER	C an..35
R		Sender's Unique Internal Reference Number Main document number.	

This is the identifier of the document. If the sender of a COHAOR document needs to send a cancellation of that document, he has to use the same DOCUMENT/MESSAGE NUMBER that was used in the original message.

R	1225	MESSAGE FUNCTION, CODED	C an..3
		When 1001 is "292":	
D		1 Cancellation (cancel whole message)	
D		9 Original (whole new message)	
		When 1001 is "845":	
D		27 Not accepted (only when the party notified is the sender of the inspection request)	
D		29 Accepted without amendment	
D		34 Accepted with amendment	
		When 1001 is "846":	
D		1 Cancellation (cancel whole message)	
D		9 Original (whole new message)	
		When 1001 is "847":	
D		1 Cancellation (cancel whole message)	
D		9 Original (whole new message)	

The following tables summarizes all the different combinations of sender, receiver, DE1001 and DE1225 according to the implemented scenario:

1st scenario: Inspections at the Border Inspection Post or at the Non Intrusive Inspection area

Sender	Receiver	Description of the message	DE1001	DE1225
Customs Broker	SCPP	Inspection request – Original	292	9
SCPP	Container terminal	Inspection request – Original	292	9
Customs Broker	SCPP	Inspection request – Cancellation	292	1
SCPP	Container terminal	Inspection request – Cancellation	292	1
SCPP	Customs Broker	Inspection instruction – Accepted without amendment	845	29
SCPP	Container terminal	Inspection instruction – Accepted without amendment	845	29
SCPP	Customs Broker	Inspection instruction – Accepted with amendment (change of proposed date)	845	34
SCPP	Container terminal	Inspection instruction – Accepted with amendment (change of proposed date)	845	34
SCPP	Customs Broker	Inspection instruction – Not accepted	845	27
SCPP	Customs Broker	Communication on a previous scheduled inspection - Original	846	9
SCPP	Container terminal	Communication on a previous scheduled inspection - Original	846	9
SCPP	Customs Broker	Communication on a previous scheduled inspection - Cancellation	846	1
SCPP	Container terminal	Communication on a previous scheduled inspection - Cancellation	846	1

2nd scenario: Inspections at the terminal

Sender	Receiver	Description of the message	DE1001	DE1225
Customs Broker	Shipping agent	Inspection request – Original	292	9
Shipping agent	Container terminal	Inspection request – Original	292	9
Shipping agent	SCPP	Inspection request – Original	292	9

Customs Broker	Shipping agent	Inspection request – Cancelation	292	1
Shipping agent	Container terminal	Inspection request – Cancelation	292	1
Shipping agent	SCPP	Inspection request – Cancelation	292	1
Container terminal	Shipping agent	Inspection instruction – Accepted without amendment	845	29
Shipping agent	Customs Broker	Inspection instruction – Accepted without amendment	845	29
Shipping agent	SCPP	Inspection instruction – Accepted without amendment	845	29
Container terminal	Shipping agent	Inspection instruction – Accepted with amendment (change of proposed date)	845	34
Shipping agent	Customs Broker	Inspection instruction – Accepted with amendment (change of proposed date)	845	34
Shipping agent	SCPP	Inspection instruction – Accepted with amendment (change of proposed date)	845	34
Container terminal	Shipping agent	Inspection instruction – Not accepted	845	27
Shipping agent	Customs Broker	Inspection instruction – Not accepted	845	27
Shipping agent	SCPP	Inspection instruction – Not accepted	845	27
Container terminal	Shipping agent	Communication on a previous scheduled inspection - Original	846	9
Shipping agent	Customs Broker	Communication on a previous scheduled inspection - Original	846	9

Sender	Receiver	Description of the message	DE1001	DE1225
Shipping agent	SCPP	Communication on a previous scheduled inspection - Original	846	9
Container terminal	Shipping agent	Communication on a previous scheduled inspection - Cancelation	846	1
Shipping agent	Customs Broker	Communication on a previous scheduled inspection - Cancelation	846	1
Shipping agent	SCPP	Communication on a previous scheduled inspection - Cancelation	846	1
Shipping agent	Container terminal	Request for permanence - Original	847	9
Shipping agent	Customs Broker	Request for permanence - Original	847	9
Shipping agent	SCPP	Request for permanence - Original	847	9
Shipping agent	Container terminal	Request for permanence - Cancelation	847	1
Shipping agent	Customs Broker	Request for permanence - Cancelation	847	1
Shipping agent	SCPP	Request for permanence - Cancelation	847	1

COHAOR003	DTM	REQUIRED
------------------	------------	-----------------

COHAOR003^137^Date/time/period^203

Example: COHAOR003^137^200809091722^203

The DTM at this level can be used to specify dates related to the message

Only one occurrence of this segment is used. The document/message send date is required.

R	2380	Date/time/period		C	an..35
R		Date/time			
R	2379	Date/time/period	format qualifier	C	an..3
R		203	CCYYMMDDHMM		

COHAOR004	FTX	REQUIRED (1..3)
------------------	------------	------------------------

COHAOR004^TEXT SUBJECT QUALIFIER^TEXT REFERENCE^[Free text]^[Free text]^[Free text]^[Free text]

Example: COHAOR004^AEA^PX^Observaciones generales^de la mercancía

Code or clear text indication of the type of change with respect to the earlier sent message

One occurrence of this segment is required (type and number of packages) and two are optional (change information and cargo remarks).

M	4451	TEXT SUBJECT QUALIFIER	M	an..3
D		AEA Cargo remarks		
D		CHG Change information		
R		PAC Packing/marketing information Information regarding the packaging and/or marking of goods. It will be used to describe the type and number of packages.		
D	C107	TEXT REFERENCE	C	
M	4441	Free text, coded	M	an..17
		When 4451 is "AEA":		
O		PX For operational purposes, only when cargo is palletized it must be used this data element with "AEA" in DE4451.		
		When 4451 is "CHG":		
D		[C1] Message level information changed		
D		[C2] Message level information added		
D		[C3] Message level information deleted		
D		[C4] Container information changed		
D		[C5] Container(s) added		
D		[C6] Container(s) deleted		
R		When 4451 is "PAC": Use UN/ECE Recommendation number 21 (2 alpha code), e.g. "SA" Sack.		
D	C108	TEXT LITERAL	C	
M	4440	Free text	M	an..512
M		When 4451 is "AEA": General remarks referred to the container cargo, other than when the cargo is palletized.		
O		When 4451 is "PAC": Number of packages in the container.		
O	4440	Free text	C	an..512
O	4440	Free text	C	an..512
O	4440	Free text	C	an..512
O	4440	Free text	C	an..512

M SEGMENT GROUP 1 - COHAOR005 (RFF)

Group Function:	A group of segments to specify references relating to the whole message.
Group Repeats:	9
Group Status:	Conditional
Group Usage:	Dependent
Clarification:	Group 1 should be used in the case of changes to information transmitted in a previous message. <i>Group 1 should be used in the case of changes to information transmitted in a previous message.</i>

COHAOR005	RFF	MANDATORY
------------------	------------	------------------

COHAOR005^Reference qualifier^Reference number^[Line number]

Example: COHAOR005^ACW^DOC1233

To specify references applicable to the whole message, such as the previous message reference
One occurrence of this segment is required (reference to a previous message) when the function of the message is other than "original" or when the message name is other than "inspection request". There are two more optional occurrences for the freight forwarder's reference and a reference to identify a group of containers that have to be inspected together.

M	C506	REFERENCE	M
M	1153	Reference qualifier	M an..3
D		ACW	Reference to a previous message <i>Must be used when the document/message name (DE1001 in segment BGM) is other than "292" and the message function (DE1225 in segment 2005) is other than Original (e.g. in case of a replacement message). In both situations, a reference to the previous message has to be sent in the data element 1154 of this segment and the reference has to be the document/message number (DE1004 in segment BGM of the previous message).</i>
D		FF	Freight forwarder's reference number When the container indicated in this message has to be inspected together with other/s container/s, this reference will link this message to the messages of the other containers.
D		AST	Group reference number When several containers have to be inspected together, it must be declared the number that identifies these group of containers.
R	1154	Reference number	C an..35
R			Number. When the SSCP has received the request for an inspection manually (in a paper form, because the sender was not able to send an EDI message) this number will start with the string "MANUAL".
D	1156	Line number	C an..6
D			When several containers have to be inspected together, it must be declared the total number of containers (only when DE1153 is "AST")

M SEGMENT GROUP 2 - COHAOR006 (NAD)

Group Function: A group of segments to identify a party and/or addresses and related contacts.

Group Repeats: 9

Group Status: Mandatory

Group Usage: Mandatory

Clarification: This segment group is mandatory in the message and must always be used.

COHAOR006

NAD

MANDATORY

COHAOR006^PARTY QUALIFIER^Party id. identification^Name and address line^[Name and address line]^Name and address line^[Name and address line]^Name and address line^[Party name]^Party name^[Party name]^Party name^[Street and number/p.o. box]^Street and number/p.o. box^[Street and number/p.o. box]^CITY NAME^[POSTCODE IDENTIFICATION]^COUNTRY, CODED]

Example: COHAOR006^CN^A61961488^PORTIC BARCELONA S.A.^^^^SAME ADDRESS^^^^THE STREET^^^BARCELONA^08080^ES

To specify the name/address and their related function, either by CO82 only and/or unstructured by CO58 or structured by CO80 thru 3207.

The NAD segment at this level must always be sent. It identifies parties associated with the equipment release(s) transmitted in the message.

Two occurrences of this segment are required (message sender and shipping agent) and one is optional (the invoice, when it is different from the message sender).

There are two possibilities for declaring party details: use only the C058 composite or the composites C080 (name) and C059 (street) and the data elements 3164 (city name), 3229 (country sub-entity), 3251 (postcode) and 3207 (country, coded). In this implementation, it is recommended the second alternative

M	3035	PARTY QUALIFIER		M an..3
R		MS	Message Sender	
R		CN	Consignee	
D		IV	Invoicee (must be sent where the message sender differs from the invoicee)	
D	C082	PARTY IDENTIFICATION DETAILS		C
M	3039	Party id. identification		M an..35
R		NIF/CIF		
D	C058	NAME AND ADDRESS		C
M	3124	Name and address line		M an..35
O	3124	Name and address line		C an..35
O	3124	Name and address line		C an..35
O	3124	Name and address line		C an..35
O	3124	Name and address line		C an..35
D	C080	PARTY NAME		C
M	3036	Party name		M an..35
O	3036	Party name		C an..35
O	3036	Party name		C an..35
O	3036	Party name		C an..35
O	3036	Party name		C an..35
D	C059	STREET		C
M	3042	Street and number/p.o. box		M an..35
O	3042	Street and number/p.o. box		C an..35
O	3042	Street and number/p.o. box		C an..35
O	3164	CITY NAME		C an..35

O	3251	POSTCODE IDENTIFICATION	C an..9
O	3207	COUNTRY, CODED	C an..3

R SEGMENT GROUP 4 - COHAOR007, COHAOR008, COHAOR009, COHAOR010, COHAOR011, COHAOR012, COHAOR013, COHAOR014 (EQD, RFF, DTM, LOC, FTX, GOR, HAN, MEA)

Group Function: A group to specify the containers to be released.

Group Repeats: 1
 Group Status: Mandatory
 Group Usage: Mandatory

Clarification: The EQD Group must always be transmitted.

COHAOR007 EQD MANDATORY

COHAOR007^CN^EQUIPMENT IDENTIFICATION^[Code list qualifier]^EQUIPMENT SIZE AND TYPE

Example: COHAOR007^CN^GLDU0987750^55^22G0

To identify a unit of equipment.

To specify container or equipment details.

The COHAOR007 segment must always be sent.

D	C237	EQUIPMENT IDENTIFICATION	C
R	8260	Equipment identification number	C an..17
R		<i>Equipment Number</i>	
		<i>Container numbers must include both prefix and number, expressed as a contiguous string without spaces or hyphens.</i>	
D	1131	Code list qualifier	C an..3
D		<i>55 Quality conformance</i>	
		<i>Use this code when the equipment identification number is ISO6346 compliant and the control digit is calculated according to this standard. Otherwise, skip this data element.</i>	
D	C224	EQUIPMENT SIZE AND TYPE	C
R	8155	Equipment size and type identification	C an..10
R		<i>Equipment Size and type</i>	
		<i>Container size and type according to ISO6346 codes.</i>	

COHAOR008 RFF REQUIRED (2..9)

COHAOR008^Reference qualifier^Reference number

Example: COHAOR008^ATZ^43123

To specify references related to the container. At least two repetitions must always be sent. One for the ship's stay reference and another for the regulatory body that may inspect the goods.

At least two repetitions must always be sent. One for the ship's stay reference, that is always required, and another for the regulatory body that may inspect the goods. It can be one or more than one regulatory bodies and, in this segment, has to be declared the number of the request for inspection sent to them.

M	C506	REFERENCE	M
M	1153	Reference qualifier	M an..3
R		<i>[ATZ] Ship's stay reference number</i>	
		<i>Reference number assigned by a port authority to the stay of a vessel in the port.</i>	
		<i>For goods unloaded at the Port, even if they are going to be transhipped to another vessel, it must be declared the</i>	

ship's stay reference of the vessel from where the goods have been unloaded.

For goods that will be loaded at the Port, only if they do not proceed from a transshipment from another vessel, it must be declared the ship's stay reference of the vessel to where the goods will be loaded.

It has to be declared the regulatory body that has requested the physical inspection (it could be more than one).

- [Z05] Customs
Customs authorities.
- [Z20] Sanidad Vegetal - Phytosanitary
Government agency responsible for the inspection of vegetable substances being imported.
- [Z21] Sanidad Animal
Government agency responsible for the for the importation of live animals and for the inspection of animal food.
- [Z22] Sanidad Exterior - animal products
Government agency responsible for public health matters. Animal products.
- [Z23] Sanidad Exterior - vegetal products
Government agency responsible for public health matters. Vegetal products.
- [Z24] Farmacia
- [Z25] SOIVRE - Quality controls
- [Z26] SOIVRE - CITES
- [Z27] SOIVRE - Safety controls
- [Z28] Vigilancia aduanera
- [Z29] Guardia Civil
- [Z30] ARB - Risk analysis team from Barcelona
- [Z31] PDI - Import designated points (Puntos designados de importación)
- [Z99] Other

R	1154	Reference number	C	an..35
D		If DE1153 is "ATZ" it must be declared the Ship's stay reference number.		
D		If DE1153 is "Z05", "Z28", "Z29" or "Z30" it must be declared the Customs declaration number.		
D		If DE1153 is "Z25", "Z26" or "Z27" it must be declared the number of the request for commercial quality controls (SOIVRE).		
D		If DE1153 is "Z22", "Z23" or "Z31", it must be declared the number of the request for public health safety controls (Sanidad Exterior).		
D		If DE1153 is "Z21", it must be declared the number of the request for animal health safety controls (Sanidad Animal).		
D		If DE1153 is "Z20", it must be declared the number of the request for phytosanitary controls (Sanidad Vegetal).		
D		If DE1153 is "Z24", it must be declared the number of the request for pharmaceutical controls (Farmacia).		

COHAOR009	DTM	REQUIRED (1..2)
------------------	------------	------------------------

COHAOR009^{Date/time/period qualifier}^{Date/time/period}¹⁰²

Example: COHAOR009⁶⁴²⁰⁰⁸⁰³⁰²¹⁰²

To specify dates relating to the equipment

Only one occurrence of this segment is required.

M	C507	DATE/TIME/PERIOD	M
M	2005	Date/time/period qualifier	M an..3
R		For the request for positioning for inspection and the request for permanence at the inspection area:	
	64	Delivery date/time, earliest	
		When goods could be positioned at a given date or after it.	
		For the assignment of a positioning date:	
	76	Delivery date/time, scheduled for	
R	2380	Date/time/period	C an..35
R		Date/time/period	

R	2379	Date/time/period	format	qualifier	C	an..3
R		102	CCYYMMDD			

COHAOR010	LOC	REQUIRED (2.2)
------------------	------------	-----------------------

COHAOR010^PLACE/LOCATION QUALIFIER^LOCATION IDENTIFICATION^[RELATED LOCATION ONE IDENTIFICATION]

Example: COHAOR010^14^B62120175^ZONA DE INSPECCIONES

To specify locations relating to the equipment. Two repetitions must always be sent. One for the terminal where goods are located and another for the facility where they will be inspected

Two occurrences must be sent. One for the terminal where goods are located and another for the facility where goods will be positioned.

R	3227	PLACE/LOCATION QUALIFIER		M	an..3
D		14	Location of goods		
		229	Inspection site		

R	C517	LOCATION IDENTIFICATION		C	
R	3225	Place/location identification		C	an..25
R		For location of goods (code "14" in DE3227), it must be used the CIF/NIF from the terminal of origin (1 st scenario) or the terminal where the equipment will be inspected (2 nd scenario). For inspection site (code "229" in DE3227), the following temporary codes must be used:			
D		[BIP]	Border inspection post (PIF in Spanish) (1 st scenario)		
D		[NII]	Non Intrusive Inspection area (1 st scenario)		
D		[YRD]	Terminal yard (2 nd scenario)		
D		[WAR]	Terminal warehouse (2 nd scenario)		

O	C519	RELATED LOCATION ONE IDENTIFICATION		C	
R	3223	Related place/location one identification		C	an..25
R		Special code used when the terminal has more than one location (only with code "14" in DE3227)			

COHAOR011	FTX	REQUIRED
------------------	------------	-----------------

COHAOR011^AAA^TEXT REFERENCE^Free text^[Free text]^Free text^[Free text]^Free text]

Example: COHAOR011^AAA^0311^PESCADO^FRESCO

Coded or clear text information related to equipment

Only one occurrence of this segment is required.

M	4451	TEXT SUBJECT QUALIFIER		M	an..3
D		AAA	Goods description		
D	C107	TEXT REFERENCE		C	
M	4441	Free text, coded		M	an..17
M		Use the Combined Nomenclature (código arancelario)			
D	C108	TEXT LITERAL		C	
R		Description of goods			
M	4440	Free text		M	an..512
O	4440	Free text		C	an..512
O	4440	Free text		C	an..512
O	4440	Free text		C	an..512
O	4440	Free text		C	an..512

COHAOR012	GOR	REQUIRED
------------------	------------	-----------------

COHAOR012^[TRANSPORT MOVEMENT, CODED]^Government action, coded]

Example: COHAOR012^2^3

Coded or clear text information related to equipment
Only one occurrence of this segment must be sent

R	8323	TRANSPORT MOVEMENT, CODED	C	an..3
		1 Export Self explanatory.		
		2 Import Self explanatory.		
		5 Transshipment The cargo is being moved by more than one transport means in succession.		
O	C232	GOVERNMENT ACTION	C	
O	9417	Government action, coded	C	an..3
		4 Inspection The cargo has been or will be inspected. [12] Customer requirements The action has been requested by the customer. [99] Other		

COHAOR013	HAN	REQUIRED
------------------	------------	-----------------

COHAOR013^Handling instructions, coded^[Handling Instructions]

Example: COHAOR013^99^INSPECCIÓN ESPECIAL

To specify handling and where necessary, notify hazards

The HAN segment is to be used once only, to nominate a specific handling or service instruction for a container or group of containers

Only one instruction would be indicated. If different services request different operations, it will be necessary to take the most restrictive.

R	C524	HANDLING INSTRUCTIONS	C	
R	4079	Handling instructions, coded	C	an..3
R		Requested operation [11] Inspection [12] Partially unloaded (pasillo) [14] Fully unloaded with recount/classification [15] Transfer (trasvase) [16] Positioning [17] Fumigation. The cargo has been or will be fumigated. [18] Ventilation. The cargo has been or will be ventilated. [19] Ventilation with 5 days of permanence. [99] Other (specify)		
D	4078	Handling Instructions	C	an..70
D		If 4079 is "other", specify the requested operation		

COHAOR014	MEA	OPTIONAL (0..1)
------------------	------------	------------------------

COHAOR014^AAE^G^KGM^Measurement value

Example: COHAOR014^AAE^G^KGM^1425

To specify physical measurements, including dimension tolerances, weights and counts

To specify the weights or volumes of the goods item or the specified part thereof in the specified container in SGP

R	6311	MEASUREMENT APPLICATION QUALIFIER	M	an..3
R		AAE Measurement		
R	C502	MEASUREMENT DETAILS	C	
R	6313	Measurement dimension, coded	C	an..3
R		G Gross Weight		

R	C174	VALUE/RANGE	C
R	6411	Measure unit qualifier	M an..3
R		<i>KGM</i> <i>Kilogram</i>	
R	6314	Measurement value	C n..18
R		<i>Weight</i>	

D SEGMENT GROUP 5 - COHAOR015 (TDT)

Group Function:	A Group of segments to indicate details of inland movement of equipment.
Group Repeats:	1
Group Status:	Conditional
Group Usage:	Dependent
Clarification:	The TDT at this level is used to specify transport arrangements beyond the location from which the equipment is released. It will be mandatory for export. <i>It will be mandatory for import.</i>

COHAOR015	TDT	MANDATORY
------------------	------------	------------------

COHAOR015^20^^1^[Carrier identification]^[Carrier name]^Id. of means of transport identification^Id. of the means of transport

Example: COHAOR015^20^^1^CCCU^CARRIER NAME^1234567^VESSEL NAME

To specify the transport details such as mode of transport, means of transport, its conveyance reference number and the identification of the means of transport.

The COHAOR015 segment must be used if Group 5 is used.

M	8051	TRANSPORT STAGE QUALIFIER		M an..3
M		20	Main-carriage Transport	
R	C220	MODE OF TRANSPORT		C
R	8067	Mode of transport, coded		C an..3
R		1	Maritime	
O	C040	CARRIER		C
R	3127	Carrier identification		C an..17
R			Carrier code	
O	3128	Carrier name		C an..35
R			Carrier name (free text)	
R	C222	TRANSPORT IDENTIFICATION		C
R	8213	Id. of means of transport identification		C an..9
R			Lloyd's Number	
R	8212	Id. of the means of transport		C an..35
R			Vessel name (free text)	

O SEGMENT GROUP 9 - COHAOR016, COHAOR017 (DGS, FTX)

Group Function:	A Group of segments to indicate the dangerous goods details related to the goods item.
Group repeats:	1
Group status:	Conditional
Group Usage:	Dependent
Clarification:	To specify the dangerous goods details related to the goods item. <i>When dangerous goods are stored in the container, an occurrence of this group will be used.</i>

COHAOR016 DGS MANDATORY

COHAOR016^IMD^HAZARD CODE^UNDG INFORMATION^PACKING GROUP CODED

Example: COHAOR016^IMD^3.2^1194^2

To identify dangerous goods

The DGS must be sent if Group 9 is used. It should be used in conjunction with the FTX segment which follows

The COHAOR016 segment must be used when segment group 9 is used.

R	8273	DANGEROUS GOODS REGULATIONS, CODED	C	an..3
R		IMD IMO IMDG Code		
R	C205	HAZARD CODE	C	
R	8351	Hazard code identification	M	an..7
R		IMDG Class Number		
R	C234	UNDG INFORMATION	C	
R	7124	UNDG number	C	n4
R		UNDG number		
R	8339	PACKING GROUP, CODED	C	an..3

COHAOR017 FTX REQUIRED (1..2)

COHAOR017^TEXT SUBJECT QUALIFIER^Free text^[Free text]^[Free text]^[Free text]^[Free text]

Example: COHAOR017^AAD^CLORHIDRIC ACID^AND OTHER COMPONENTS

To provide free form or coded text information

To specify the textual information of the dangerous goods, such as proper shipping name and additional dangerous goods information.

When dangerous goods are stored in the container, one or two occurrences of this group will be used.

R	4451	TEXT SUBJECT QUALIFIER	M	an..3
R		AAD Dangerous goods technical name		
O		AAC Dangerous goods additional information		
R	C108	TEXT LITERAL	C	
R	4440	Free text	M	an..26
O	4440	Free text	C	an..26
O	4440	Free text	C	an..26
O	4440	Free text	C	an..26
O	4440	Free text	C	an..26

R

Dangerous goods technical name or Additional dangerous goods information (maximum 26 characters per line)

D SEGMENT GROUP 11 - COHAOR018, COHAOR019 (TMP, RNG)

Group Function: A group of segments to describe the temperature
 Group Repeats: 1
 Group Status: Conditional
 Group Usage: Optional
 Clarification: The maximum number of repetitions of this segment is 1
When controlled temperature goods are stored in the container, an occurrence of this group has to be used.

COHAOR018 TMP MANDATORY

COHAOR018^2^Temperature setting^Measure Unit qualifier

Example: COHAOR018^2^2^CEL

To specify temperature settings for the container.
The COHAOR018 segment must be used when segment group 11 is used.

R	6245	TEMPERATURE QUALIFIER		M	an..3
R		2	Transport temperature		
R	C239	TEMPERATURE SETTING		C	
R	6246	Temperature setting		C	n3
R			Temperature setting of the container.		
R	6411	Measure Unit qualifier		C	an..3
D		CEL	Celsius		
D		FAH	Degree Fahrenheit		

COHAOR019 RNG OPTIONAL

COHAOR019^5^Measure unit qualifier^Range Minimum^Range Maximum

Example: COHAOR019^5^CEL^2^6

The RNG segment may be used if a range of temperatures is to be specified. It should always be used in conjunction with the preceding TMP segment.

M	6167	RANGE TYPE QUALIFIER		M	an..3
M		5	Temperature Range		
R	C280	RANGE		C	
M	6411	Measure unit qualifier		M	an..3
D		CEL	Celsius		
D		FAH	Fahrenheit		
R	6162	Range Minimum		C	n..18
R			Lowest temperature		
R	6152	Range Maximum		C	n..18
R			Highest temperature		

UNZ001 UNZ MANDATORY

UNZ001

End of message

DATA SET

Data interchanged in this message:

Data item	Group	Segment	Element		Inspection request	Inspection instruction	Com. about a previous instruction	Request for permanence
Message date/time	Header	DTM	C507/2005	"137"	R	R	R	R
	Header	DTM	C507/2380	Message date/time CCYYMMDDHH MM	R	R	R	R
	Header	DTM	C507/2379	"203"	R	R	R	R
Cargo remarks	Header	FTX	4451	"AEA"	O	O	O	O
	Header	FTX	C107/4441	Not used	X	X	X	X
	Header	FTX	C108/4440	General remarks	O	O	O	O
Cargo remarks	Header	FTX	4451	"AEA"	O	O	O	O
	Header	FTX	C107/4441	"FX"	O	O	O	O
	Header	FTX	C108/4440	Palletized cargo	O	O	O	O
Change information	Header	FTX	4451	"CHG"	O	X	O	O
	Header	FTX	4453	Not used	X	X	X	X
	Header	FTX	C107/4441	Use codes	O	X	O	O
	Header	FTX	C108/4440	Not used	O	X	O	O
Packing/marketing information	Header	FTX	4451	"PAC"	R	R	R	R
	Header	FTX	C107/4441	UN/ECE rec.21	R	R	R	R
	Header	FTX	C108/4440	Packages	R	R	R	R
Reference to a previous message	1	RFF	C506/1153	"ACW"	O	O	O	O
	1	RFF	C506/1153	Ref. previous message	O	O	O	O
	1	RFF	C506/1156	Not used	O	O	O	O
Freight forwarder's reference number	1	RFF	C506/1153	"FF"	O	O	O	O
	1	RFF	C506/1153	Common reference to other containers	O	O	O	O
	1	RFF	C506/1156	Not used	O	O	O	O
Group reference number	1	RFF	C506/1153	"AST"	O	O	O	O
	1	RFF	C506/1153	Group reference number	O	O	O	O
	1	RFF	C506/1156	Total number of containers in the group	O	O	O	O
Message sender	2	NAD	3035	"MS"	R	R	R	R
	2	NAD	C082/3039	NIF/CIF	R	R	R	R
	2	NAD	C058/3124	Sender's name	R	R	R	R
Consignee	2	NAD	3035	"CN"	R	R	R	R
	2	NAD	C082/3039	NIF/CIF	R	R	R	R
	2	NAD	C058/3124	Shipping agent's name	R	R	R	R
Invoicee	2	NAD	3035	"IV"	O	O	O	O
	2	NAD	C082/3039	NIF/CIF	O	O	O	O
	2	NAD	C058/3124	Invoicee's name	O	O	O	O
Equipment number	4	EQD	8053	"CN"	R	R	R	R
	4	EQD	C237/8260	Equipment number	R	R	R	R
	4	EQD	C224/8155	Equipment size/type ISO6346	R	R	R	R
Ship's stay reference number	4	RFF	C506/1153	"ATZ"	R	R	R	R
	4	RFF	C506/1154	Ship's stay reference number	R	R	R	R
Inspection request number (Customs)	4	RFF	C506/1153	"ABT"	D	D	D	D
	4	RFF	C506/1154	Customs goods declaration	D	D	D	D
Inspection request number (SOIVRE)	4	RFF	C506/1153	"SOF"	D	D	D	D
	4	RFF	C506/1154	Inspection request number	D	D	D	D
Inspection request number (Sanidad Exterior)	4	RFF	C506/1153	"SEF"	D	D	D	D
	4	RFF	C506/1154	Inspection request number	D	D	D	D
Inspection request	4	RFF	C506/1153	"SAF"	D	D	D	D

number (Sanidad Animal)								
	4	RFF	C506/1154	Inspection request number	D	D	D	D
Inspection request number (Sanidad Vegetal)	4	RFF	C506/1153	"SVF"	D	D	D	D
	4	RFF	C506/1154	Inspection request number	D	D	D	D
Inspection request number (Farmacia)	4	RFF	C506/1153	"FAF"	D	D	D	D
	4	RFF	C506/1154	Inspection request number	D	D	D	D
Delivery date/time, earliest	4	DTM	C507/2005	"64"	R	X	X	R
	4	DTM	C507/2380	Message date/time CCYYMMDD	R	X	X	R
	4	DTM	C507/2379	"102"	R	X	X	R
Delivery date/time, scheduled for	4	DTM	C507/2005	"76"	X	R	R	X
	4	DTM	C507/2380	Message date/time CCYYMMDD	X	R	R	X
	4	DTM	C507/2379	"102"	X	R	R	X
Terminal of origin	4	LOC	3027	"14"	R	R	R	R
	4	LOC	C517/3225	NIF/CIF	R	R	R	R
	4	LOC	C519/3223	Terminal area	O	O	O	O
Inspection site	4	LOC	3027	"229"	R	R	R	R
	4	LOC	C517/3225	Use temporary codes listed in that segment	R	R	R	R
	4	LOC	C519/3223	Not used	X	X	X	X
Goods description	4	FTX	4451	"AAA"	R	R	R	R
	4	FTX	4453	Not used	X	X	X	X
	4	FTX	C107/4441	Combined Nomenclature code	R	R	R	R
	4	FTX	C108/4440	Description of goods	R	R	R	R
Transport movement	4	GOR	8323	Use codes listed in that data element	R	R	R	R
Government agency	4	GOR	C232/9415	Use codes listed in that data element	R	R	R	R
Government action	4	GOR	C232/9417	Use codes listed in that data element	R	R	R	R
Requested operation: inspection	4	HAN	C524/4079	"11"	D	D	D	D
	4	HAN	C524/4078	Not used	X	X	X	X
Requested operation: partially unloaded (pasillo)	4	HAN	C524/4079	"12"	D	D	D	D
	4	HAN	C524/4078	Not used	X	X	X	X
Requested operation: Fully unloaded with recount/classification	4	HAN	C524/4079	"14"	D	D	D	D
	4	HAN	C524/4078	Not used	X	X	X	X
Requested operation: Transfer (trasvase)	4	HAN	C524/4079	"15"	D	D	D	D
	4	HAN	C524/4078	Not used	X	X	X	X
Requested operation: Positioning	4	HAN	C524/4079	"16"	D	D	D	D
	4	HAN	C524/4078	Not used	X	X	X	X
Requested operation: Other	4	HAN	C524/4079	"99"	D	D	D	D
	4	HAN	C524/4078	Requested operation	D	D	D	D
Gross weight	4	MEA	6311	"AAE"	R	O	O	O
	4	MEA	C502/6313	"G"	R	O	O	O
	4	MEA	C174/6411	"KGM"	R	O	O	O
	4	MEA	C174/6414	Gross weight	R	O	O	O
Means of transport	5	TDT	8051	"20"	R	R	R	R
	5	TDT	C220/8067	"1"	R	R	R	R
	5	TDT	C040/3127	Carrier code (SCAC)	O	O	O	O
	5	TDT	C040/3128	Carrier name	O	O	O	O
	5	TDT	C222/8213	Lloyd's number	R	R	R	R
	5	TDT	C222/8212	Vessel's name	R	R	R	R
Dangerous goods	9	DGS	8273	"IMD"	D	X	X	D
	9	DGS	C205/8351	IMDG Class	D	X	X	D

				number				
	9	DGS	C234/7124	UNDG number	D	X	X	D
	9	DGS	8339	Packing group, coded	D	X	X	D
Dangerous goods technical name	9	FTX	4451	"AAD"	O	X	X	O
	9	FTX	4453	Not used	X	X	X	X
	9	FTX	C108/4440	Dangerous goods technical name	O	X	X	O
Dangerous goods additional information	9	FTX	4451	"AAC"	O	X	X	O
	9	FTX	C108/4440	Dangerous goods additional information	O	X	X	O
Temperature	11	TMP	6245	"2"	D	X	X	D
	11	TMP	C239/6246	Temperature setting of the container	D	X	X	D
	11	TMP	C239/6411	Measure unit qualifier	D	X	X	D
Range details	11	RNG	6167	"5"	O	X	X	O
	11	RNG	C280/6411	Measure unit qualifier	O	X	X	O
	11	RNG	C280/6162	Lowest temperature	O	X	X	O
	11	RNG	C280/6152	Highest temperature	O	X	X	O

EXAMPLE

ENV001^ESA43446522^ESA61961488
COHAOR001^1^COHAOR^D^00B^UN
COHAOR002^292^DOC1234^9
COHAOR003^137^200809091722^203
COHAOR004^AEA^PX^Observaciones generales^de la mercancía
COHAOR004^CHG^C1^Cambios generales^en el mensaje
COHAOR004^PAC^BX^15
COHAOR005^ACW^DOC1233
COHAOR005^FF^EXP435469
COHAOR005^AST^GRP25^3
COHAOR006^MS^A43446522^JORGE CAMBRA^S.A.^World Trade Center Barcelona^Moll de Barcelona^Edifici
Est 6ª planta^Barcelona^08089^ES
COHAOR006^CN^A61961488^PORTIC BARCELONA S.A.^SAME ADDRESS^THE
STREET^BARCELONA^08080^ES
COHAOR006^IV^A12345678^THE INVOICEE
COHAOR007^CN^GLDU0987750^55^22G0
COHAOR008^ATZ^43123
COHAOR008^Z05^08125843123
COHAOR008^Z21^SANIDADANIMAL12345
COHAOR008^Z24^FARMACIA12345
COHAOR008^Z27^SOIVRE44838
COHAOR009^64^20080302^102
COHAOR009^76^20080305^102
COHAOR010^14^B62120175^ZONA DE INSPECCIONES
COHAOR010^229^YRD
COHAOR011^AAA^0311^PESCADO^FRESCO
COHAOR012^2
COHAOR012^2^3
COHAOR013^99^INSPECCIÓN ESPECIAL
COHAOR014^AAE^G^KGM^1425
COHAOR015^20^1^CCCU^CARRIER NAME^1234567^VESSEL NAME
COHAOR016^IMD^3.2^1194^2^3^CEL
COHAOR017^AAD^CLORHIDRIC ACID^AND OTHER COMPONENTS
COHAOR017^AAC^HANDLE WITH^CARE
COHAOR018^2^2^CEL
COHAOR019^5^CEL^2^6
UNZ001