
Container positioning for inspection

COHAOR

CONTAINER SPECIAL HANDLING MESSAGE

<!Fòrum telemàtic>

GUIDELINE FOR THE EDISIMPLEX
D00B COHAOR MESSAGE

Version 1.6

Message:	COHAOR
Version:	1.6
Date:	February 2014
Source:	<i>Portic Barcelona</i>

TABLE OF CONTENTS

GENERAL INTRODUCTION	3
CHOREOGRAPHY	7
STATUS INDICATORS AND USAGE INDICATORS.....	10

GENERAL INTRODUCTION

FORMAL DEFINITION

COHAOR: "Order to perform a specified special handling and/or service on containers. This message is part of a total set of container-related messages. These messages serve to facilitate the intermodal handling of containers by streamlining the information exchange. The business scenario for the container messages is clarified in a separate document, called: 'Guide to the scenario of EDIFACT container messages'."

The 'Guide to the scenario of the EDIFACT container messages' has been published by ITIGG under the title "Guide to the UN/EDIFACT Container Messages" (Document reference JM4/ITIGG/96.103/v.12).

CLARIFICATION

The COHAOR message is an order to perform specified special handling and/or services on items of transport equipment.

It is intended to be used in conjunction with a release order message - either a COPARN (empty container release) or COREOR (full container release) - in which case it would usually follow the release order, where the container in question had already been identified.

The COHAOR message contains more detailed specific instructions for special handling and/or servicing of the container.

UN/EDIFACT DIRECTORY REFERENCE

This document is based on the UN/EDIFACT D00B directory.

CHANGE CONTROL

Version 1.6 includes the following changes to the previous version 1.5 from November 2010

- Two temporary codes have been deleted from the LOC segment (Group 4) :
 - o BRT (Barcelona Reefer Terminal).
 - o PDI (Import Designated Points).
- Several changes have been made in the HAN segment (Group 4):
 - o There have been added the codes:
 - [13] “Fully unloaded”
 - [20] “Identity control”
 - [21] “Verification of Fumigation”
 - [22] “Resealing”
 - [23] “Inspection (return to terminal)”
 - o It has been changed the meaning of the code [14] “Fully unloaded with recount/classification” for “Fully unloaded with classification”.
 - o There have been deleted the codes: [16] “Positioning” and [19] “Ventilation with 5 days of permanence”.
- BIP denomination has been changed for BIP Area.
- The list regarding declaration numbers at the RFF segment (Group 4), has been modified with the following changes.
 - o Phytosanitary has been divided in two parts, depending on the product destination: products for human consumption [Z50] or products for non-human consumption [Z51].
 - o Veterinary has been divided in four parts, depending on the type of product: animal products [Z52], non-animal products [Z53], Designated Point of Entry [Z54] or animal products for human consumption [Z55].
 - o Foreign Health has been divided in three parts, depending on the type of product: animal products [Z56], non-animal products [Z57] or Designated Point of Import [Z58].
 - o The rest of numbers have been re-arranged as follows:
 - Pharmacy [Z59]
 - SOIVRE – Quality controls [Z60]
 - SOIVRE – CITES [Z61]
 - SOIVRE – Safety controls [Z62]
 - Guardia Civil – [Z63]
 - UAR – Risk analysis unit – [Z64]
 - CSI – Container Security Initiative – [Z65]
 - Megaports – [Z66]
- CTA and COM segments (Group 3) have been added and they have been incorporated into the branching diagram.

Version 1.5 includes the following changes to the previous version 1.4b from March 2010 (changes named from P1 to P6 were agreed at the working group meeting from 13th May 2010 and changes from P7 to P15 were agreed at the working group meeting from 23th June 2010):

- In the section of “choreography” it has been added a new use for COHAOR message with code “846” at DE1001. When the SCPP knows that the received information has some mistakes that can be solved replacing the information received by the correct one, the SCPP can update in its system the information received and then, a message can be sent to the customs broker with the information present in the SCPP system and a copy can also be sent to the container terminal.
- (P1) A new code has been included for DE1001 of segment BGM: [844] “Express Inspection Request”. This positioning modality may only be applied for several types of inspections (i.e. Border Inspection Post or Non Intrusive Inspections). The choreography will be the same than for regular inspections but the system will assign higher priority for these requests than the regular ones.
- (P5) It is mandatory to declare the “invoice” when someone should pay for the operation requested.
- (P4) Several changes have been made to separate the location of the inspection from the requested period for the positioning. On a previous version, the code for the location included the requested period for positioning.
 - At the DTM segment (Group 4) it has been included the possibility of declaring date and time (since now, only the date was possible). DE2380 will include the time and DE2379 will include the new code “203” that means the format: “CCYYMMDDHHMM”. Time will be used for identifying positioning periods and, for those, a convention will be applied:
 - If the operator only can choose between mornings and afternoons:
 - 08:00 will stand for the “morning period”
 - 14:00 will stand for the “afternoon period”
 - If the day is divided in more periods, the starting time of the period will be declared: i.e. if the period is from 11:00 to 14:00, it has to be declared 11:00.
 - At the DE3225 of the LOC segment (Group 4) it has been removed several codes that were used for afternoon positioning.
- (P13) In the “Inspection instructions message” or the “Communication about a previous scheduled inspection message” from scenarios 1 and 2, and in the “rejection message” defined in scenario 2 it has included the possibility of including some comments. For this purpose, a new occurrence of segment FTX at header level has been included with “AFB” in data element 4451.
- (P16) When a regulatory body requests the inspection of a goods item that is less than the container load it could be necessary to declare the total weight of the container and the total number of packages contained inside the equipment. A second occurrence of segment MEA with “AAD” qualifier could be used for declaring the total gross weight and segment CNT could be used with the total number of packages contained in the LCL container.

Version 1.4b includes the following changes to the previous version 1.4 from November 2009:

- Code [Z29] “Guardia Civil” has been deleted from data element 1153 of segment RFF (Group 4).

Version 1.4 includes the following changes to the previous version 1.3 from May 2009:

- PDI inspections are performed in a special area and this area has to be included in DE3225 from LOC segment (group 4) as [PDI]. And PDI will be deleted as a service (code [Z31]) from DE1153 from segment RFF (group 4).
- A new inspection area has been included: [BRT] for Barcelona Reefer Terminal.
- Break bulk cargo can be declared in this message using the prefix “BULK” followed by the weight of the goods item, instead of the container number.
- When cargo it is not containerized and the inspection has to be performed on a special area of the Port, several data will not be mandatory and they would be only optional: shipping agent, vessel details, ship’s call number, place of origin (terminal),...

Version 1.3 is the first public version of this guide

CHOREOGRAPHY

This message could be interchanged in two different scenarios. The first one is an scenario where the Positioning Coordinator Service (SCPP) manages the resources needed for the inspections and assign the dates and hours for those inspections. That happens when the inspection is executed at the Border Inspection Service (BIP or PIF in Spanish) or when it is realized at the Non Intrusive Inspection (NII) area of the port.

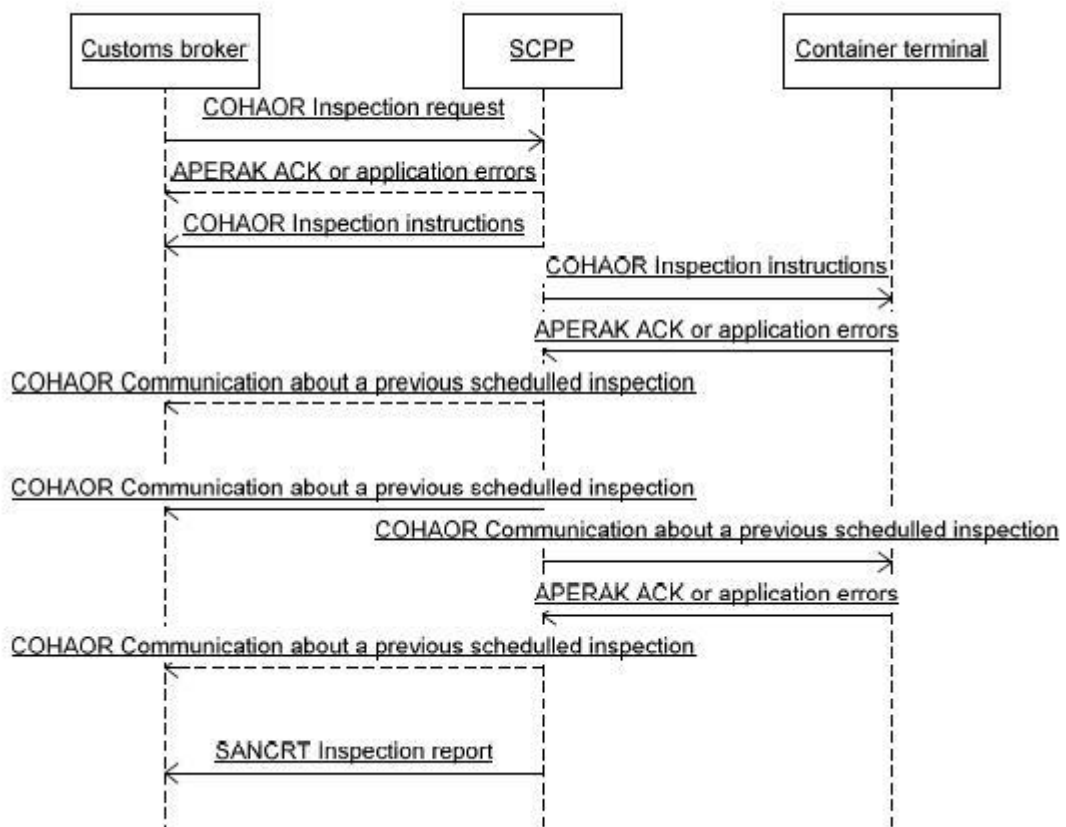


Fig. 1 Inspection at the Border Inspection Post or at the Non Intrusive Inspection area

In this scenario, the customs broker request for an inspection to the SCPP (COHAOR message with code “292” at DE1001) and the SCPP assigns some resources and a date for the inspection (COHAOR message with code “845” at DE1001). If some formal errors are detected, an APERAK message will be send, instead of the COHAOR message (this APERAK message is detailed on the ESMT – inbound and outbound land- procedure). A copy of this message is sent to the container terminal (COHAOR message with code “845” at DE1001) that can acknowledge the reception of this message or can answer with an error response if the container will not be at the terminal at the specified date (APERAK message). If the container terminal rejects the informative message received, the SCPP can modify the scheduled date and propose a new one. The SCPP will send a message to the customs broker proposing a new date (1st use of the COHAOR message with code “846” at DE1001). After that, the new date has to be communicated to the container terminal and the answer could be in the same way that has been described before. If the SCPP knows that the resources will not be available at the given date, the SCPP will send a message to the customs broker proposing a new date (2nd use of the COHAOR message with code “846” at DE1001) and must also send a copy to the container terminal (COHAOR message with code “846” at DE1001).

Sometimes the SCPP knows that the received information has some mistakes that can be solved replacing the information received by the correct one and the SCPP can update in its system the information received and can send a message to the customs broker with the information present in its system (3rd use of the COHAOR message with code "846" at DE1001) and must also send a copy to the container terminal (COHAOR message with code "846" at DE1001).

When the inspection has finalized, a message will be sent from the SCPP to the custom broker notifying this event (SANCRT message).

The second scenario is when the inspection will be executed at the container terminal yard. In this scenario the container terminal manages the necessary resources for the inspections and assigns dates and hours for those inspections. The Coordination Inspection Service must receive copy of all the interchanged messages. In this scenario, the customs broker requests for an inspection to the shipping agent (COHAOR message with code "292" at DE1001) and the shipping agent relays this message to the container terminal and the SCPP (COHAOR message with code "292" at DE1001). The customs broker must also send a copy of this message to the SCPP (COHAOR message with code "292" at DE1001).

The container terminal assigns some resources and sends a message to the shipping agent with the date for the inspection (COHAOR message with code "845" at DE1001). It may not accept the request for inspection when the container will not be at the terminal (COHAOR message with code "845" at DE1001 and code "27" at DE1225). The shipping agent must send a copy of this message to the customs broker (COHAOR message with code "845" at DE1001) and he also must send a copy to the SCPP (COHAOR message with code "845" at DE1001).

The custom broker, the shipping agent and the container terminal can agree the possibility of a direct communication from the customs broker to the container terminal. In this scenario, the shipping agent will be informed of the operations requested by the custom brokers.

When the container terminal knows that, at the given date, the container will not be positioned at the inspection area, it must send a message to the customs broker proposing a new date (COHAOR message with code "846" at DE1001) and must also sent a copy to the SCPP (COHAOR message with code "846" at DE1001).

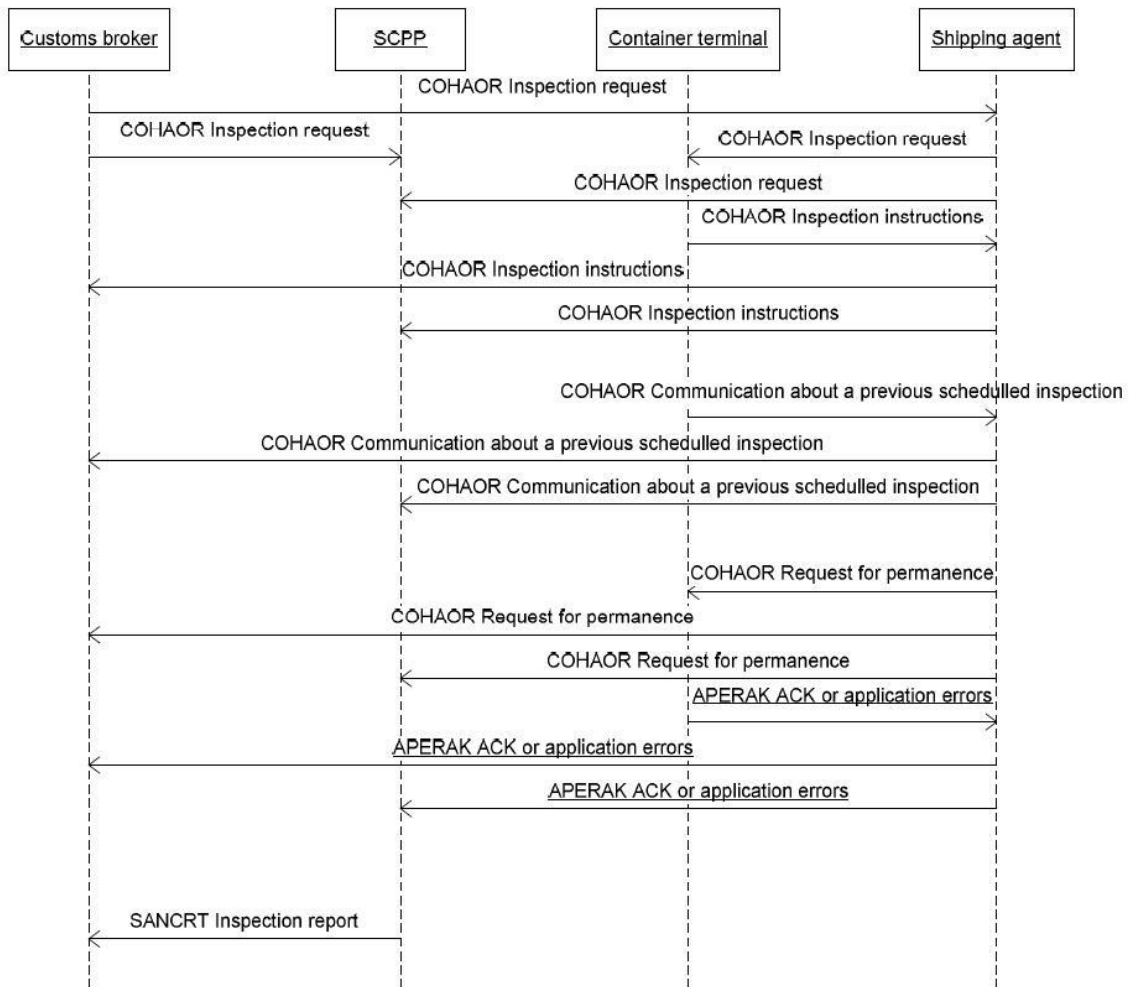


Fig. 2 Inspection at a specific area of the container terminal

For a positioned container, if it has not been possible to inspect during the day, the shipping agent can request for the permanence of the container at the inspection area (COHAOR message with code “847” at DE1001). The container terminal may acknowledge the reception of this message or may reject this operation when it will not have the resources for doing it (APERAK message). The container terminal will forward this message to the customs broker and the S CPP.

When the inspection has finalized, a message will be sent from the S CPP to the custom broker notifying the event (SANCRT message).

STATUS INDICATORS AND USAGE INDICATORS

Status Indicators

Status Indicators (M and C) form part of the UN/EDIFACT standard and indicate a minimum requirement to fulfil the needs of the message structure.

The Status Indicators are:-

<i>Value</i>	<i>Description</i>
M	Mandatory

This entity must appear in all messages. Shown as Usage Indicator "M" in Implementation Guidelines.

C	Conditional
---	-------------

This entity is used by agreement between the parties to the transaction.

A 'Conditional' Status Indicator may be represented by a supporting Usage Indicator which is either R, O, D or X (see below)

Usage Indicators

Throughout this document reference is made to indicators (M, R, D, O and X) which are shown adjacent to data items and which dictate for the particular message or set thereof the agreed usage of the data items or entities.

Set out below are the indicators and their respective uses:-

<i>Value</i>	<i>Description</i>
M	Mandatory

Indicates that this item is mandatory in the message.

R	Required
---	----------

Indicates that this entity must be sent in this implementation.

D	Dependent
---	-----------

Indicates that the use of the entity depends upon a well-defined condition or set of conditions. These conditions must be clearly specified in the relevant implementation guideline.

O	Optional
---	----------

Indicates that this entity is at the need or discretion of the sender of the message.

X	Not Used
---	----------

Indicates that the entity is not to be used in this message implementation.

Where an element within a composite is marked "M" or "R", but the composite has been marked "O" or "D", this indicates that the element must always be transmitted only if the composite is used.

Temporary codes

In this implementation there are used some codes that are not included in the UNCL. When those codes are used, they are between the "[" and the "]" characters. For example, ABT is a valid code for DE1153 (according to UNCL) and [SOF] is a temporary code.

SEGMENTS

Structure of the message and correspondance with the EDIFACT segments

HEADER SECTION

ENV001 UNB REQUIRED

ENV001^Sender ID^Receiver ID

Example: ENV001^ESA43446522^ESA61961488

- Sender ID Mandatory an..35

Identification of the sender of the document, coded. Composed by 2 letter country code plus the NIF of the company that sends the document. For example ESA61961488.

- Receiver ID Mandatory an..35

Identification of the receiver of the document, coded. Composed by 2 letter country code plus the NIF of the company receiver of the document. For example ESA61961488.

COHAOR001 UNH REQUIRED

COHAOR001^MESSAGE REFERENCE NUMBER^COHAOR^D^00B^UN

Example: COHAOR001^1^COHAOR^D^00B^UN

The COHAOR001 segment must always be sent.

M	0062	MESSAGE REFERENCE NUMBER	M an..14
R		Message Reference Number	

COHAOR002 BGM REQUIRED

COHAOR002^DOCUMENT/MESSAGE NAME^DOCUMENT/MESSAGE NUMBER^MESSAGE FUNCTION, CODED

Example: COHAOR002^292^DOC1234^9

To indicate the type and function of a message and to transmit the identifying number.

The COHAOR002 segment must always be sent.

R	C002	DOCUMENT/MESSAGE NAME	++C
R	1001	Document/message name, coded	C an..3
D		292 Inspection request	
		A message requesting a party to inspect items.	
D		[844] Express inspection request	
		A message requesting a party to inspect items immediately.	
D		[845] Inspection instruction	
		A message notifying a party from the assigned instructions for an inspection.	
D		[846] Communication about a previous scheduled inspection	
		A message from the party in charge of the management of the positioning for inspection giving new details for the scheduled inspection.	
D		[847] Request for permanence at the inspection area	
		A message from the shipping agent to the terminal requesting the maintenance of the equipment at the inspection area of the terminal.	

R 1004 DOCUMENT/MESSAGE NUMBER C an..35
 R Sender's Unique Internal Reference Number
 Main document number.

This is the identifier of the document. If the sender of a COHAOR document needs to send a cancellation of that document, he has to use the same DOCUMENT/MESSAGE NUMBER that was used in the original message.

R 1225 MESSAGE FUNCTION, CODED C an..3
 When 1001 is "292" or "844":
 D 1 Cancellation (cancel whole message)
 D 9 Original (whole new message)
 When 1001 is "845":
 D 27 Not accepted
 (only when the party notified is the sender of the inspection request)
 D 29 Accepted without amendment
 D 34 Accepted with amendment
 When 1001 is "846":
 D 1 Cancellation (cancel whole message)
 D 9 Original (whole new message)
 When 1001 is "847":
 D 1 Cancellation (cancel whole message)
 D 9 Original (whole new message)

The following tables summarizes all the different combinations of sender, receiver, DE1001 and DE1225 according to the implemented scenario:

1st scenario: Inspections at the Border Inspection Post or at the Non Intrusive Inspection area

Sender	Receiver	Description of the message	DE1001	DE1225
Customs Broker	SCPP	Inspection request – Original	292/844	9
SCPP	Container terminal	Inspection request – Original	292/844	9
Customs Broker	SCPP	Inspection request – Cancelation	292/844	1
SCPP	Container terminal	Inspection request – Cancelation	292/844	1
SCPP	Customs Broker	Inspection instruction – Accepted without amendment	845	29
SCPP	Container terminal	Inspection instruction – Accepted without amendment	845	29
SCPP	Customs Broker	Inspection instruction – Accepted with amendment (change of proposed date)	845	34
SCPP	Container terminal	Inspection instruction – Accepted with amendment (change of proposed date)	845	34
SCPP	Customs Broker	Communication on a previous scheduled inspection - Original	846	9
SCPP	Container terminal	Communication on a previous scheduled inspection - Original	846	9
SCPP	Customs Broker	Communication on a previous scheduled inspection - Cancelation	846	1
SCPP	Container terminal	Communication on a previous scheduled inspection - Cancelation	846	1

2nd scenario: Inspections at the terminal

Sender	Receiver	Description of the message	DE1001	DE1225
Customs Broker	Shipping agent	Inspection request – Original	292/844	9
Shipping agent	Container terminal	Inspection request – Original	292/844	9
Shipping agent	SCPP	Inspection request – Original	292/844	9
Customs Broker	Shipping agent	Inspection request – Cancelation	292/844	1
Shipping agent	Container terminal	Inspection request – Cancelation	292/844	1
Shipping agent	SCPP	Inspection request – Cancelation	292/844	1
Container terminal	Shipping agent	Inspection instruction – Accepted without amendment	845	29
Shipping agent	Customs Broker	Inspection instruction – Accepted without amendment	845	29
Shipping agent	SCPP	Inspection instruction – Accepted without amendment	845	29
Container terminal	Shipping agent	Inspection instruction – Accepted with amendment (change of proposed date)	845	34
Shipping agent	Customs Broker	Inspection instruction – Accepted with amendment (change of proposed date)	845	34
Shipping agent	SCPP	Inspection instruction – Accepted with amendment (change of proposed date)	845	34
Container terminal	Shipping agent	Inspection instruction – Not accepted	845	27
Shipping agent	Customs Broker	Inspection instruction – Not accepted	845	27
Shipping agent	SCPP	Inspection instruction – Not accepted	845	27
Container terminal	Shipping agent	Communication on a previous scheduled inspection - Original	846	9
Shipping agent	Customs Broker	Communication on a previous scheduled inspection - Original	846	9

Sender	Receiver	Description of the message	DE1001	DE1225
Shipping agent	SCPP	Communication on a previous scheduled inspection - Original	846	9
Container terminal	Shipping agent	Communication on a previous scheduled inspection - Cancelation	846	1
Shipping agent	Customs Broker	Communication on a previous scheduled inspection - Cancelation	846	1
Shipping agent	SCPP	Communication on a previous scheduled inspection - Cancelation	846	1
Shipping agent	Container terminal	Request for permanence - Original	847	9
Shipping agent	Customs Broker	Request for permanence - Original	847	9
Shipping agent	SCPP	Request for permanence - Original	847	9
Shipping agent	Container terminal	Request for permanence - Cancelation	847	1
Shipping agent	Customs Broker	Request for permanence - Cancelation	847	1
Shipping agent	SCPP	Request for permanence - Cancelation	847	1

COHAOR003 **DTM** **REQUIRED**

COHAOR003^137^Date/time/period^203

Example: COHAOR003^137^200809091722^203

The DTM at this level can be used to specify dates related to the message

Only one occurrence of this segment is used. The document/message send date is required.

R 2380 Date/time/period C an..35
R Date/time

R 2379 Date/time/period format qualifier C an..3
R 203 CCYYMMDDHMM

COHAOR004**FTX****REQUIRED (1..3)**

COHAOR004^TEXT SUBJECT QUALIFIER^TEXT REFERENCE^[Free text]^[Free text]^[Free text]^[Free text]

Example: COHAOR004^AEA^PX^Observaciones generales^de la mercancia

Code or clear text indication of the type of change with respect to the earlier sent message

One occurrence of this segment is required (type and number of packages) and three are optional (change information and cargo remarks and comments).

M	4451	TEXT SUBJECT QUALIFIER	M	an..3
D		AEA Cargo remarks		
D		AFB Comment		
D		CHG Change information		
R		PAC Packing/marketing information Information regarding the packaging and/or marking of goods. It will be used to describe the type and number of packages.		
D	C107	TEXT REFERENCE	C	
M	4441	Free text, coded	M	an..17
		When 4451 is "AEA":		
O		PX For operational purposes, only when cargo is palletized it must be used this data element with "AEA" in DE4451.		
		When 4451 is "CHG":		
D		[C1] Message level information changed		
D		[C2] Message level information added		
D		[C3] Message level information deleted		
D		[C4] Container information changed		
D		[C5] Container(s) added		
D		[C6] Container(s) deleted		
R		When 4451 is "PAC": Use UN/ECE Recommendation number 21 (2 alpha code), e.g. "SA" Sack.		
X		When 4451 is "AFB" this data element will not be included.		
D	C108	TEXT LITERAL	C	
M	4440	Free text	M	an..512
M		When 4451 is "AEA": General remarks referred to the container cargo, other than when the cargo is palletized.		
O		When 4451 is "PAC": Number of packages in the container.		
O		When 4451 is "AFB": In the "Inspection instructions message" or the "Communication about a previous scheduled inspection message" from scenarios 1 and 2, and in the "rejection message" defined in scenario 2 it is possible to include some comments.		
O	4440	Free text	C	an..512
O	4440	Free text	C	an..512
O	4440	Free text	C	an..512
O	4440	Free text	C	an..512

M SEGMENT GROUP 1 - COHAOR005 (RFF)

Group Function: A group of segments to specify references relating to the whole message.

Group Repeats: 9

Group Status: Conditional

Group Usage: Dependent

Clarification: Group 1 should be used in the case of changes to information transmitted in a previous message.

Group 1 should be used in the case of changes to information transmitted in a previous message.

COHAOR005

RFF

MANDATORY

COHAOR005[^]Reference qualifier[^]Reference number[^][Line number]

Example: COHAOR005[^]ACW[^]DOC1233

To specify references applicable to the whole message, such as the previous message reference

One occurrence of this segment is required (reference to a previous message) when the function of the message is other than "original" or when the message name is other than "inspection request". There are two more optional occurrences for the freight forwarder's reference and a reference to identify a group of containers that have to be inspected together.

M	C506	REFERENCE		M
M	1153	Reference qualifier		M an..3
D		ACW	Reference to a previous message <i>Must be used when the document/message name (DE1001 in segment BGM) is other than "292" or "844" and the message function (DE1225 in segment 2005) is other than Original (e.g. in case of a replacement message). In both situations, a reference to the previous message has to be sent in the data element 1154 of this segment and the reference has to be the document/message number (DE1004 in segment BGM of the previous message).</i>	
D		FF	Freight forwarder's reference number When the container indicated in this message has to be inspected together with other/s container/s, this reference will link this message to the messages of the other containers.	
D		AST	Group reference number When several containers have to be inspected together, it must be declared the number that identifies these group of containers.	
R	1154	Reference number		C an..35
R			Number. When the SSCP has received the request for an inspection manually (in a paper form, because the sender was not able to send an EDI message) this number will start with the string "MANUAL".	
D	1156	Line number		C an..6
D			When several containers have to be inspected together, it must be declared the total number of containers (only when DE1153 is "AST")	

M SEGMENT GROUP 2 - COHAOR006 (NAD)

Group Function:	A group of segments to identify a party and/or addresses and related contacts.
Group Repeats:	9
Group Status:	Mandatory
Group Usage:	Mandatory
Clarification:	This segment group is mandatory in the message and must always be used.

COHAOR006	NAD	MANDATORY
------------------	------------	------------------

COHAOR006^PARTY QUALIFIER^Party id. identification^Name and address line^[Name and address line]^Name and address line^[Name and address line]^Name and address line^[Party name]^Party name^[Party name]^Party name^[Party name]^Street and number/p.o. box]^Street and number/p.o. box]^Street and number/p.o. box]^CITY NAME]^POSTCODE IDENTIFICATION]^COUNTRY, CODED]

Example: COHAOR006^CN^A61961488^PORTIC BARCELONA S.A.^^^^SAME ADDRESS^^^^THE STREET^^^BARCELONA^08080^ES

To specify the name/address and their related function, either by CO82 only and/or unstructured by CO58 or structured by CO80 thru 3207.

The NAD segment at this level must always be sent. It identifies parties associated with the equipment release(s) transmitted in the message.

Three occurrences of this segment are required for containerized cargo (message sender, shipping agent and invoicee). For break bulk cargo, shipping agent will be optional.

There are two possibilities for declaring party details: use only the C058 composite or the composites C080 (name) and C059 (street) and the data elements 3164 (city name), 3229 (country sub-entity), 3251 (postcode) and 3207 (country, coded). In this implementation, it is recommended the second alternative

M	3035	PARTY QUALIFIER		M an..3
R		MS	Message Sender	
R		CN	Consignee (in this message implementation guidelines, this code is used for the shipping agent details). Mandatory for containerized cargo.	
R		IV	Invoicee (must be sent where the message sender differs from the invoicee)	
D	C082	PARTY IDENTIFICATION DETAILS		C
M	3039	Party id. identification		M an..35
R		NIF/CIF		
D	C058	NAME AND ADDRESS		C
M	3124	Name and address line		M an..35
O	3124	Name and address line		C an..35
O	3124	Name and address line		C an..35
O	3124	Name and address line		C an..35
O	3124	Name and address line		C an..35
D	C080	PARTY NAME		C
M	3036	Party name		M an..35
O	3036	Party name		C an..35
O	3036	Party name		C an..35
O	3036	Party name		C an..35
O	3036	Party name		C an..35
D	C059	STREET		C
M	3042	Street and number/p.o. box		M an..35
O	3042	Street and number/p.o. box		C an..35
O	3042	Street and number/p.o. box		C an..35
O	3164	CITY NAME		C an..35
O	3251	POSTCODE IDENTIFICATION		C an..9
O	3207	COUNTRY, CODED		C an..3

M SEGMENT GROUP 3 - COHAOR0065, COHAOR0065 (CTA,COM)

Group Function: A group of segments to identify a contact and his communications.

Group Repeats: 9

Group Status: Conditional

Group Usage: Optional

Clarification: This segment group is mandatory when the message is sent by the shipping agent.

COHAOR0065

CTA

MANDATORY

COHAOR0065^CONTACT INFORMATION^^Department or employee

Example: COHAOR0065^MS^^EXPORT DEPARTMENT

To identify the name of the contact

The CTA segment identifies the party that has to be contacted when more information about the message is requested.

R	3139	CONTACT INFORMATION	C an..3
R		MS Message Sender contact	

R	C056	DEPARTMENT OR EMPLOYEE DETAILS	C
X	3143	Department or employee identification	C an..17

R	3142	Department or employee	C an..35
---	------	------------------------	----------

COHAOR0066

COM

OPTIONAL

COHAOR0066^COMMUNICATION OF CONTACT^Communication's number

Example: COHAOR0065^939765432

To identify a communication number of a department or a person to whom the communication should be directed

The COM segment identifies the communication number of the contact person at sending party.

R	C076	COMMUNICATION OF CONTACT	M
R	3148	Communication's number	M an..512

X	3155	Communication's channel qualifier	M an..3
---	------	-----------------------------------	---------

R SEGMENT GROUP 4 - COHAOR007, COHAOR008, COHAOR009, COHAOR010, COHAOR011, COHAOR012, COHAOR013, COHAOR014 (EQD, RFF, DTM, LOC, FTX, GOR, HAN, MEA)

Group Function: A group to specify the containers to be released.

Group Repeats: 1
 Group Status: Mandatory
 Group Usage: Mandatory

Clarification: The EQD Group must always be transmitted.

COHAOR007 EQD MANDATORY

COHAOR007^EQUIPMENT QUALIFIER^EQUIPMENT IDENTIFICATION^[Code list qualifier]^EQUIPMENT SIZE AND TYPE

Example: COHAOR007^CN^GLDU0987750^55^22G0 (for container cargo)
 COHAOR007^BB^BULK12300 (for break bulk cargo)

To identify a unit of equipment.
 To specify container or equipment details.
The COHAOR007 segment must always be sent.

M	8053	EQUIPMENT QUALIFIER		M an..3
D		CN	Container	
D		BB	Break bulk	
D	C237	EQUIPMENT IDENTIFICATION		C
R	8260	Equipment identification number		C an..17
R		Equipment Number		
			Container numbers must include both prefix and number, expressed as a contiguous string without spaces or hyphens.	
			Break bulk identification	
			For break bulk cargo it must be used the following string: "BULK" plus the weight of the goods item expressed in Kgr., as a contiguous string without spaces or hyphens. E.g. "BULK25" when its weight is 25 Kgr. and "BULK1200" if its weight is 1,200 Kgr.	
D	1131	Code list qualifier		C an..3
D		55	Quality conformance	
			Use this code when the equipment identification number is ISO6346 compliant and the control digit is calculated according to this standard. Otherwise, skip this data element.	
D	C224	EQUIPMENT SIZE AND TYPE		C
D			ISO6346 code for size and type	
			Use this code when it is containerized cargo.	
R	8155	Equipment size and type identification		C an..10
R		Equipment Size and type		
			Container size and type according to ISO6346 codes.	

COHAOR008**RFF****REQUIRED (1..9)****COHAOR008**^Reference qualifier^Reference number

Example: COHAOR008^ATZ^43123

To specify references related to the container.

For containerized cargo, at least two repetitions must always be sent. One for the ship's stay reference, that is always required, and another for the regulatory body that may inspect the goods. It can be one or more than one regulatory bodies and, in this segment, has to be declared the number of the request for inspection sent to them.

For non containerized cargo, at least the regulatory body repetition must be sent.

M	C506	REFERENCE	M
M	1153	Reference qualifier	M an..3
R		[ATZ] Ship's stay reference number Reference number assigned by a port authority to the stay of a vessel in the port. Mandatory for containerized cargo. For goods unloaded at the Port, even if they are going to be transshipped to another vessel, it must be declared the ship's stay reference of the vessel from where the goods have been unloaded. For goods that will be loaded at the Port, only if they do not proceed from a transshipment from another vessel, it must be declared the ship's stay reference of the vessel to where the goods will be loaded.	

It has to be declared the regulatory body that has requested the physical inspection (it could be more than one).

- [Z05] Customs
Customs authorities.
- [Z50] Sanidad Vegetal(POV-CH) - Phytosanitary
Government agency responsible for the inspection of vegetable substances being imported for human consumption.
- [Z51] Sanidad Vegetal(POV-NCH)- Phytosanitary
Government agency responsible for the inspection of vegetable substances being imported for non-human consumption.
- [Z52] Sanidad Animal(POA-NCH) - Veterinary
Government agency responsible for the importation of live animals and for the inspection of food (with animal origin) for animals.
- [Z53] Sanidad Animal(PONA-NCH) - Veterinary
Government agency responsible for the inspection of food (with non-animal origin) for animals
- [Z54] Sanidad Animal(PED)- Veterinary
(Designated Point of Entry)
- [Z55] Sanidad Animal(POA-CH) (Export)- Veterinary
Government agency responsible for the inspection of food(with animal origin) for human consumption.
- [Z56] Sanidad Exterior (POA-CH) - Foreign health
Government agency responsible for foreign health matters.
(Animal Products).
- [Z57] Sanidad Exterior (PONA-CH) - Foreign health
Government agency responsible for foreign health matters. (Non-animal products).
- [Z58] Sanidad Exterior (PDI-PED) - Foreign Health
(Designated Point of Import - Designated Point of Entry)
- [Z59] Farmacia - Pharmacy
- [Z60] SOIVRE - Quality controls
- [Z61] SOIVRE - CITES
- [Z62] SOIVRE - Safety controls
- [Z63] Guardia Civil
- [Z64] UAR - Risk analysis unit
- [Z65] CSI - Container Security Initiative
- [Z66] Megaports
- [Z99] Other

R	1154	Reference number	C	an..35
D		If DE1153 is "ATZ" it must be declared the Ship's stay reference number.		
D		If DE1153 is "Z05", "Z63", "Z64", "Z65" or "Z66" it must be included the Customs declaration number.		
D		If DE1153 is "Z60", "Z61" or "Z62" it must be declared the number of the request for commercial quality controls (SOIVRE).		
D		If DE1153 is "Z56", "Z57" or "Z58", it must be declared the number of the request for foreign health safety controls (Sanidad Exterior).		
D		If DE1153 is "Z52", "Z53", "Z54" or "Z55" it must be declared the number of the request for animal health safety controls (Sanidad Animal).		
D		If DE1153 is "Z50" or "Z51", it must be declared the number of the request for phytosanitary controls (Sanidad Vegetal).		
D		If DE1153 is "Z59", it must be declared the number of the request for pharmaceutical controls (Farmacia).		

COHAOR009	DTM	REQUIRED (1..2)
------------------	------------	------------------------

COHAOR009^{Date/time/period qualifier}^{Date/time/period}**102**

Example: COHAOR009⁶⁴²⁰⁰⁸⁰³⁰²¹⁰²

COHAOR009⁶⁴²⁰⁰⁸⁰³⁰²⁰⁸⁰⁰²⁰³

To specify dates relating to the equipment

Only one occurrence of this segment is required.

Time will be used for identifying positioning periods and, for those, a convention will be applied:

** If the operator only can choose between mornings and afternoons:*

- 08:00 will stand for the "morning period"

- 14:00 will stand for the "afternoon period"

** If the day is divided in more periods, the starting time of the period will be declared: i.e. if the period is from 11:00 to 14:00, it has to be declared 11:00.*

Each inspection service will establish their inspection operation hours and always they will be identified using their initial time.

M	C507	DATE/TIME/PERIOD	M
M	2005	Date/time/period qualifier	M an..3
R		For the request for positioning for inspection and the request for permanence at the inspection area:	
	64	Delivery date/time, earliest	
		When goods could be positioned at a given date or after it.	
		For the assignment of a positioning date:	
	76	Delivery date/time, scheduled for	

R	2380	Date/time/period	C	an..35
R		Date/time/period		

R	2379	Date/time/period format qualifier	C	an..3
R		102 CCYYMMDD		
R		203 CCYYMMDDHHMM		

COHAOR010	LOC	REQUIRED (1..2)
------------------	------------	------------------------

COHAOR010^PLACE/LOCATION QUALIFIER^LOCATION IDENTIFICATION^[RELATED LOCATION ONE IDENTIFICATION]

Example: COHAOR010^14^B62120175^ZONA DE INSPECCIONES

To specify locations relating to the equipment.

When cargo is containerized, two occurrences must be sent. One for the terminal where goods are located and another for the facility where goods will be positioned.

When cargo is not containerized, only one occurrence must be sent: The facility where goods will be positioned.

R	3227	PLACE/LOCATION QUALIFIER	M an..3
D		14 Location of goods	
		229 Inspection site	
R	C517	LOCATION IDENTIFICATION	C
R	3225	Place/location identification	C an..25
R		<i>For location of goods (code "14" in DE3227), it must be used the CIF/NIF from the terminal of origin (1st scenario) or the terminal where the equipment will be inspected (2nd scenario) ("location of goods" is mandatory for containerized cargo).</i>	
		<i>For inspection site (code "229" in DE3227), the following temporary codes must be used:</i>	
D		[BIP] BIP AREA (1 st scenario)	
D		[NII] Non Intrusive Inspection area (1 st scenario)	
D		[YRD] Terminal yard (2 nd scenario)	
D		[WAR] Terminal warehouse (2 nd scenario)	
O	C519	RELATED LOCATION ONE IDENTIFICATION	C
R	3223	Related place/location one identification	C an..25
R		<i>Special code used when the terminal has more than one location (only with code "14" in DE3227)</i>	

COHAOR011	FTX	REQUIRED
------------------	------------	-----------------

COHAOR011^AAA^TEXT REFERENCE^Free text^[Free text]^ [Free text]^ [Free text]^ [Free text]

Example: COHAOR011^AAA^0311^PESCADO

Coded or clear text information related to equipment

Only one occurrence of this segment is required.

M	4451	TEXT SUBJECT QUALIFIER	M an..3
D		AAA Goods description	
D	C107	TEXT REFERENCE	C
M	4441	Free text, coded	M an..17
M		<i>Use the Combined Nomenclature (código arancelario)</i>	
D	C108	TEXT LITERAL	C
R		Description of goods	
M	4440	Free text	M an..512
O	4440	Free text	C an..512
O	4440	Free text	C an..512
O	4440	Free text	C an..512
O	4440	Free text	C an..512

COHAOR012**GOR****REQUIRED****COHAOR012**^[TRANSPORT MOVEMENT, CODED]^ [Government action, coded]

Example: COHAOR012^2^4

Coded or clear text information related to equipment

Only one occurrence of this segment must be sent

R	8323	TRANSPORT MOVEMENT, CODED	C	an..3
		1 Export		
		Self explanatory.		
		2 Import		
		Self explanatory.		
		3 Transit		
		The cargo is moving in transit through a country and will not become part of the commerce of that country.		
		5 Transshipment		
		The cargo is being moved by more than one transport means in succession.		
O	C232	GOVERNMENT ACTION	C	
O	9417	Government action, coded	C	an..3
		4 Inspection		
		The cargo has been or will be inspected.		
		[12] Customer requirements		
		The action has been requested by the customer.		
		[99] Other		

COHAOR013**HAN****REQUIRED****COHAOR013**^Handling instructions, coded^ [Handling Instructions]

Example: COHAOR013^99^INSPECCIÓN ESPECIAL

To specify handling and where necessary, notify hazards

The HAN segment is to be used once only, to nominate a specific handling or service instruction for a container or group of containers

Only one instruction would be indicated. If different services request different operations, it will be necessary to take the most restrictive.

R	C524	HANDLING INSTRUCTIONS	C	
R	4079	Handling instructions, coded	C	an..3
R		Requested operation		
		[11] Inspection		
		[12] Partially unloaded (pasillo)		
		[13] Fully unloaded		
		[14] Fully unloaded with classification		
		[15] Transfer (trasvase)		
		[17] Fumigation. The cargo has been or will be fumigated.		
		[18] Ventilation. The cargo has been or will be ventilated.		
		[20] Identity control		
		[21] Verification of Fumigation		
		[22] Resealing (without opening)		
		[23] Inspection (Return to terminal)		
		[99] Other (specify)		
D	4078	Handling Instructions	C	an..70
D		If 4079 is "other", specify the requested operation		

COHAOR014**MEA****OPTIONAL (0..2)****COHAOR014^AAE^**Measurement dimension, coded**^KGM^**Measurement value

Example: COHAOR014^AAE^G^KGM^1425 (weight of the goods to be inspected)

COHAOR014^AAE^AAD^KGM^18130 (total gross weight of the container)

To specify physical measurements, including dimension tolerances, weights and counts

To specify the weights or volumes of the goods item or the specified part thereof in the specified container in SGP

A second occurrence could be possible if it is necessary to inform about the total weight of the goods at the means of transport (i.e. containers, trailers,...) that has to be inspected.

R	6311	MEASUREMENT APPLICATION QUALIFIER		M an..3
R		AAE	Measurement	
R	C502	MEASUREMENT DETAILS		C
R	6313	Measurement dimension, coded		C an..3
R		G	Gross Weight	
O		AAD	Total Gross Weight	
R	C174	VALUE/RANGE		C
R	6411	Measure unit qualifier		M an..3
R		KGM	Kilogram	
R	6314	Measurement value		C n..18
R		Weight		

D SEGMENT GROUP 5 - COHAOR015 (TDT)

Group Function: A Group of segments to indicate details of inland movement of equipment.

Group Repeats: 1

Group Status: Conditional

Group Usage: Dependent

Clarification: The TDT at this level is used to specify transport arrangements beyond the location from which the equipment is released.

It will be mandatory for import and containerized cargo.

COHAOR015

TDT

OPTIONAL

COHAOR015^20^^1^[Carrier identification]^[Carrier name]^Id. of means of transport identification^Id. of the means of transport

Example: COHAOR015^20^^1^CCCU^CARRIER NAME^1234567^VESSEL NAME

To specify the transport details such as mode of transport, means of transport, its conveyance reference number and the identification of the means of transport.

The COHAOR015 segment must be used if Group 5 is used.

M	8051	TRANSPORT STAGE QUALIFIER	M an..3
M		20 Main-carriage Transport	

R	C220	MODE OF TRANSPORT	C
R	8067	Mode of transport, coded	C an..3
R		1 Maritime	

O	C040	CARRIER	C
R	3127	Carrier identification	C an..17
R		Carrier code	

O	3128	Carrier name	C an..35
R		Carrier name (free text)	

R	C222	TRANSPORT IDENTIFICATION	C
R	8213	Id. of means of transport identification	C an..9
R		Lloyd's Number	

R	8212	Id. of the means of transport	C an..35
R		Vessel name (free text)	

O SEGMENT GROUP 9 - COHAOR016, COHAOR017 (DGS, FTX)

Group Function:	A Group of segments to indicate the dangerous goods details related to the goods item.
Group repeats:	1
Group status:	Conditional
Group Usage:	Dependent
Clarification:	To specify the dangerous goods details related to the goods item. <i>When dangerous goods are stored in the container, an occurrence of this group will be used. When there are several dangerous goods in the same container, the most dangerous one must be declared.</i>

COHAOR016 DGS MANDATORY

COHAOR016^IMD^HAZARD CODE^UNDG INFORMATION^PACKING GROUP CODED

Example: COHAOR016^IMD^3.2^1194^2

To identify dangerous goods

The DGS must be sent if Group 9 is used. It should be used in conjunction with the FTX segment which follows *The COHAOR016 segment must be used when segment group 9 is used.*

R	8273	DANGEROUS GOODS REGULATIONS, CODED	C	an..3
R		IMD IMO IMDG Code		
R	C205	HAZARD CODE	C	
R	8351	Hazard code identification	M	an..7
R		IMDG Class Number		
R	C234	UNDG INFORMATION	C	
R	7124	UNDG number	C	n4
R		UNDG number		
R	8339	PACKING GROUP, CODED	C	an..3

COHAOR017 FTX REQUIRED (1..2)

COHAOR017^TEXT SUBJECT QUALIFIER^Free text^[Free text]^[Free text]^[Free text]^[Free text]

Example: COHAOR017^AAD^CLORHIDRIC ACID^AND OTHER COMPONENTS

To provide free form or coded text information

To specify the textual information of the dangerous goods, such as proper shipping name and additional dangerous goods information.

When dangerous goods are stored in the container, one or two occurrences of this group will be used.

R	4451	TEXT SUBJECT QUALIFIER	M	an..3
R		AAD Dangerous goods technical name		
O		AAC Dangerous goods additional information		
R	C108	TEXT LITERAL	C	
R	4440	Free text	M	an..26
O	4440	Free text	C	an..26
O	4440	Free text	C	an..26
O	4440	Free text	C	an..26
O	4440	Free text	C	an..26
R		Dangerous goods technical name or Additional dangerous goods information (maximum 26 characters per line)		

D SEGMENT GROUP 11 - COHAOR018, COHAOR019 (TMP, RNG)

Group Function: A group of segments to describe the temperature

Group Repeats: 1

Group Status: Conditional

Group Usage: Optional

Clarification: The maximum number of repetitions of this segment is 1

When controlled temperature goods are stored in the container, an occurrence of this group has to be used.

COHAOR018 TMP MANDATORY

COHAOR018²^Temperature setting^Measure Unit qualifier

Example: COHAOR018²^2^CEL

To specify temperature settings for the container.

The COHAOR018 segment must be used when segment group 11 is used.

R	6245	TEMPERATURE QUALIFIER	M	an..3
R		2 Transport temperature		
R	C239	TEMPERATURE SETTING	C	
R	6246	Temperature setting	C	n3
R		Temperature setting of the container.		
R	6411	Measure Unit qualifier	C	an..3
D		CEL Celsius		
D		FAH Degree Fahrenheit		

COHAOR019 RNG OPTIONAL

COHAOR019⁵^Measure unit qualifier^Range Minimum^Range Maximum

Example: COHAOR019⁵^CEL^2^6

The RNG segment may be used if a range of temperatures is to be specified. It should always be used in conjunction with the preceding TMP segment.

M	6167	RANGE TYPE QUALIFIER	M	an..3
M		5 Temperature Range		
R	C280	RANGE	C	
M	6411	Measure unit qualifier	M	an..3
D		CEL Celsius		
D		FAH Fahrenheit		
R	6162	Range Minimum	C	n..18
R		Lowest temperature		
R	6152	Range Maximum	C	n..18
R		Highest temperature		

COHAOR020	CNT	OPTIONAL
------------------	------------	-----------------

COHAOR020^11^Control total value

Example: COHAOR020^11^125

The CNT segment will be used when the total number of packages contained on a container/means of transport would have to be declared.

M	6069	Control total type code qualifier	M	an...3
M		11 Total number of packages		
M	6066	Control total value	M	an...18
M		Total number of packages		

UNZ001	UNZ	MANDATORY
---------------	------------	------------------

UNZ001

End of message

DATA SET

Data interchanged in this message:

Data item	Group	Segment	Element		Inspection request	Inspection instruction	Com. about a previous instruction	Request for permanence
Message date/time	Header	DTM	C507/2005	"137"	R	R	R	R
	Header	DTM	C507/2380	Message date/time CCYYMMDDHH MM	R	R	R	R
	Header	DTM	C507/2379	"203"	R	R	R	R
Cargo remarks	Header	FTX	4451	"AEA"	O	O	O	O
	Header	FTX	C107/4441	Not used	X	X	X	X
	Header	FTX	C108/4440	General remarks	O	O	O	O
Cargo remarks	Header	FTX	4451	"AEA"	O	O	O	O
	Header	FTX	C107/4441	"FX"	O	O	O	O
	Header	FTX	C108/4440	Palletized cargo	O	O	O	O
Change information	Header	FTX	4451	"CHG"	O	X	O	O
	Header	FTX	4453	Not used	X	X	X	X
	Header	FTX	C107/4441	Use codes	O	X	O	O
	Header	FTX	C108/4440	Not used	O	X	O	O
Packing/marketing information	Header	FTX	4451	"PAC"	R	R	R	R
	Header	FTX	C107/4441	UN/ECE rec.21	R	R	R	R
	Header	FTX	C108/4440	Packages	R	R	R	R
Reference to a previous message	1	RFF	C506/1153	"ACW"	O	O	O	O
	1	RFF	C506/1153	Ref. previous message	O	O	O	O
	1	RFF	C506/1156	Not used	O	O	O	O
Freight forwarder's reference number	1	RFF	C506/1153	"FF"	O	O	O	O
	1	RFF	C506/1153	Common reference to other containers	O	O	O	O
	1	RFF	C506/1156	Not used	O	O	O	O
Group reference number	1	RFF	C506/1153	"AST"	O	O	O	O
	1	RFF	C506/1153	Group reference number	O	O	O	O
	1	RFF	C506/1156	Total number of containers in the group	O	O	O	O
Message sender	2	NAD	3035	"MS"	R	R	R	R
	2	NAD	C082/3039	NIF/CIF	R	R	R	R
	2	NAD	C058/3124	Sender's name	R	R	R	R
Consignee	2	NAD	3035	"CN"	R	R	R	R
	2	NAD	C082/3039	NIF/CIF	R	R	R	R
	2	NAD	C058/3124	Shipping agent's name	R	R	R	R
Invoicee	2	NAD	3035	"IV"	O	O	O	O
	2	NAD	C082/3039	NIF/CIF	O	O	O	O
	2	NAD	C058/3124	Invoicee's name	O	O	O	O
Equipment number	4	EQD	8053	"CN"	R	R	R	R
	4	EQD	C237/8260	Equipment number	R	R	R	R
	4	EQD	C224/8155	Equipment size/type ISO6346	R	R	R	R
Ship's stay reference number	4	RFF	C506/1153	"ATZ"	R	R	R	R
	4	RFF	C506/1154	Ship's stay reference number	R	R	R	R
Customs inspection	4	RFF	C506/1153	"Z05"	D	D	D	D
	4	RFF	C506/1154	Single Administrative Document	D	D	D	D
"Guardia Civil" Inspection	4	RFF	C506/1153	"Z63"	D	D	D	D
	4	RFF	C506/1154	Single Administrative Document	D	D	D	D
UAR (Risk Analysis Unit)	4	RFF	C506/1153	"Z64"	D	D	D	D
	4	RFF	C506/1154	Single Administrative Document	D	D	D	D

CSI (Container Security Initiative)	4	RFF	C506/1153	"Z65"	D	D	D	D
	4	RFF	C506/1154	Single Administrative Document	D	D	D	D
Megaports	4	RFF	C506/1153	"Z66"	D	D	D	D
	4	RFF	C506/1154	Single Administrative Document	D	D	D	D
Sanidad Exterior – Foreign health inspection (animal products-human consumption)	4	RFF	C506/1153	"Z56"	D	D	D	D
	4	RFF	C506/1154	Foreign health inspection request number	D	D	D	D
Sanidad Exterior – Foreign health inspection (non-animal products-human consumption)	4	RFF	C506/1153	"Z57"	D	D	D	D
	4	RFF	C506/1154	Foreign health inspection request number	D	D	D	D
Sanidad Exterior – Foreign health inspection (Designated Point of Import – Designated Point of Entry)	4	RFF	C506/1153	"Z58"	D	D	D	D
	4	RFF	C506/1154	Foreign health inspection request number	D	D	D	D
Sanidad Vegetal – Phytosanitary inspection (Human consumption)	4	RFF	C506/1153	"Z50"	D	D	D	D
	4	RFF	C506/1154	Phytosanitary inspection request number	D	D	D	D
Sanidad Vegetal – Phytosanitary inspection (Non-human consumption)	4	RFF	C506/1153	"Z51"	D	D	D	D
	4	RFF	C506/1154	Phytosanitary inspection request number	D	D	D	D
Sanidad Animal – Veterinary inspection (Animal origin – Non-human Consumption)	4	RFF	C506/1153	"Z52"	D	D	D	D
	4	RFF	C506/1154	Veterinary inspection request number	D	D	D	D
Sanidad Animal – Veterinary inspection (Non-Animal origin – Non-human Consumption)	4	RFF	C506/1153	"Z53"	D	D	D	D
	4	RFF	C506/1154	Veterinary Inspection request number	D	D	D	D
Sanidad Animal – Veterinary inspection (Designated Point of Entry)	4	RFF	C506/1153	"Z54"	D	D	D	D
	4	RFF	C506/1154	Veterinary Inspection request number	D	D	D	D
Sanidad Animal – Veterinary inspection (Animal origin / Human Consumption)	4	RFF	C506/1153	"Z55"	D	D	D	D
	4	RFF	C506/1154	Veterinary Inspection request number	D	D	D	D
Pharmacy inspection	4	RFF	C506/1153	"Z59"	D	D	D	D
	4	RFF	C506/1154	Pharmacy Inspection request number	D	D	D	D
SOIVRE – Quality control inspection	4	RFF	C506/1153	"Z60"	D	D	D	D
	4	RFF	C506/1154	SOIVRE Inspection	D	D	D	D

				request number				
SOIVRE – CITES inspection	4	RFF	C506/1153	"Z61"	D	D	D	D
	4	RFF	C506/1154	SOIVRE Inspection request number	D	D	D	D
SOIVRE – Safety control inspection	4	RFF	C506/1153	"Z62"	D	D	D	D
	4	RFF	C506/1154	SOIVRE Inspection request number	D	D	D	D
Other inspection	4	RFF	C506/1153	"Z99"	D	D	D	D
	4	RFF	C506/1154	Other inspection (not specified)	D	D	D	D
Delivery date/time, earliest	4	DTM	C507/2005	"64"	R	X	X	R
	4	DTM	C507/2380	Message date/time CCYYMMDD	R	X	X	R
	4	DTM	C507/2379	"102"	R	X	X	R
Delivery date/time, scheduled for	4	DTM	C507/2005	"76"	X	R	R	X
	4	DTM	C507/2380	Message date/time CCYYMMDD	X	R	R	X
	4	DTM	C507/2379	"102"	X	R	R	X
Terminal of origin	4	LOC	3027	"14"	R	R	R	R
	4	LOC	C517/3225	NIF/CIF	R	R	R	R
	4	LOC	C519/3223	Terminal area	O	O	O	O
Inspection site	4	LOC	3027	"229"	R	R	R	R
	4	LOC	C517/3225	Use temporary codes listed in that segment	R	R	R	R
	4	LOC	C519/3223	Not used	X	X	X	X
Goods description	4	FTX	4451	"AAA"	R	R	R	R
	4	FTX	4453	Not used	X	X	X	X
	4	FTX	C107/4441	Combined Nomenclature code	R	R	R	R
	4	FTX	C108/4440	Description of goods	R	R	R	R
Transport movement	4	GOR	8323	Use codes listed in that data element	R	R	R	R
Government action	4	GOR	C232/9417	Use codes listed in that data element	R	R	R	R
Requested operation: inspection	4	HAN	C524/4079	"11"	D	D	D	D
	4	HAN	C524/4078	Not used	X	X	X	X
Requested operation: partially unloaded (pasillo)	4	HAN	C524/4079	"12"	D	D	D	D
	4	HAN	C524/4078	Not used	X	X	X	X
Requested operation: Fully unloaded	4	HAN	C524/4079	"13"	D	D	D	D
	4	HAN	C524/4078	Not used	X	X	X	X
Requested operation: Fully unloaded with classification	4	HAN	C524/4079	"14"	D	D	D	D
	4	HAN	C524/4078	Not used	X	X	X	X
Requested operation: Transfer (trasvase)	4	HAN	C524/4079	"15"	D	D	D	D
	4	HAN	C524/4078	Not used	X	X	X	X
Requested operation: Fumigation	4	HAN	C524/4079	"17"	D	D	D	D
	4	HAN	C524/4078	Not used	X	X	X	X
Requested operation: Ventilation	4	HAN	C524/4079	"18"	D	D	D	D
	4	HAN	C524/4078	Not used	X	X	X	X
Requested operation: Identity control	4	HAN	C524/4079	"20"	D	D	D	D
	4	HAN	C524/4078	Not used	X	X	X	X
Requested operation: Verification of Fumigation	4	HAN	C524/4079	"21"	D	D	D	D
	4	HAN	C524/4078	Not used	X	X	X	X
Requested operation: Resealing	4	HAN	C524/4079	"22"	D	D	D	D
	4	HAN	C524/4078	Not used	X	X	X	X
Requested operation: Inspection (Return to terminal)	4	HAN	C524/4079	"23"	D	D	D	D

	4	HAN	C524/4078	Not used	X	X	X	X
Requested operation: Opening (without inspection)	4	HAN	C524/4079	"24"	D	D	D	D
	4	HAN	C524/4078	Not used	X	X	X	X
Requested operation: Other	4	HAN	C524/4079	"99"	D	D	D	D
	4	HAN	C524/4078	Requested operation	D	D	D	D
Gross weight	4	MEA	6311	"AAE"	R	O	O	O
	4	MEA	C502/6313	"G"	R	O	O	O
	4	MEA	C174/6411	"KGM"	R	O	O	O
	4	MEA	C174/6414	Gross weight	R	O	O	O
Total gross weight	4	MEA	6311	"AAE"	O	O	O	O
	4	MEA	C502/6313	"AAD"	O	O	O	O
	4	MEA	C174/6411	"KGM"	O	O	O	O
	4	MEA	C174/6414	Total gross weight	O	O	O	O
Means of transport	5	TDT	8051	"20"	R	R	R	R
	5	TDT	C220/8067	"1"	R	R	R	R
	5	TDT	C040/3127	Carrier code (SCAC)	O	O	O	O
	5	TDT	C040/3128	Carrier name	O	O	O	O
	5	TDT	C222/8213	Lloyd's number	R	R	R	R
	5	TDT	C222/8212	Vessel's name	R	R	R	R
Dangerous goods	9	DGS	8273	"IMD"	D	X	X	D
	9	DGS	C205/8351	IMDG Class number	D	X	X	D
	9	DGS	C234/7124	UNDG number	D	X	X	D
	9	DGS	8339	Packing group, coded	D	X	X	D
Dangerous goods technical name	9	FTX	4451	"AAD"	O	X	X	O
	9	FTX	4453	Not used	X	X	X	X
	9	FTX	C108/4440	Dangerous goods technical name	O	X	X	O
Dangerous goods additional information	9	FTX	4451	"AAC"	O	X	X	O
	9	FTX	C108/4440	Dangerous goods additional information	O	X	X	O
Temperature	11	TMP	6245	"2"	D	X	X	D
	11	TMP	C239/6246	Temperature setting of the container	D	X	X	D
	11	TMP	C239/6411	Measure unit qualifier	D	X	X	D
Range details	11	RNG	6167	"5"	O	X	X	O
	11	RNG	C280/6411	Measure unit qualifier	O	X	X	O
	11	RNG	C280/6162	Lowest temperature	O	X	X	O
	11	RNG	C280/6152	Highest temperature	O	X	X	O
Control total	Trailer	CNT	C210/6069	"11"	O	O	O	O
	Trailer	CNT	C210/6066	Total number of packages	O	O	O	O

EXAMPLE

ENV001^ESA43446522^ESA61961488
COHAOR001^1^COHAOR^D^00B^UN
COHAOR002^292^DOC1234^9
COHAOR003^137^200809091722^203
COHAOR004^AEA^PX^Observaciones generales^de la mercancía
COHAOR004^CHG^C1^Cambios generales^en el mensaje
COHAOR004^PAC^BX^15
COHAOR005^ACW^DOC1233
COHAOR005^FF^EXP435469
COHAOR005^AST^GRP25^3
COHAOR006^MS^A43446522^JORGE CAMBRA^S.A.^World Trade Center Barcelona^Moll de Barcelona^Edifici Est
6ª planta^Barcelona^08089^ES
COHAOR0065^MS^EXPORT DEPARTMENT
COHAOR0066^939765432
COHAOR006^CN^A61961488^PORTIC BARCELONA S.A.^SAME ADDRESS^THE
STREET^BARCELONA^08080^ES
COHAOR006^IV^A12345678^THE INVOICEE
COHAOR007^CN^GLDU0987750^55^22G0
COHAOR008^ATZ^43123
COHAOR008^Z05^08125843123
COHAOR008^Z52^SANIDADANIMAL12345
COHAOR008^Z59^FARMACIA12345
COHAOR008^Z60^SOIVRE44838
COHAOR009^64^200803020800^203
COHAOR009^76^200803051100^203
COHAOR010^14^B62120175^ZONA DE INSPECCIONES
COHAOR010^229^YRD
COHAOR011^AAA^0311^PESCADO^FRESCO
COHAOR012^2^4
COHAOR013^99^INSPECCIÓN ESPECIAL
COHAOR014^AAE^G^KGM^1425
COHAOR014^AAE^AAD^KGM^6200
COHAOR015^20^1^CCCU^CARRIER NAME^1234567^VESSEL NAME
COHAOR016^IMD^3.2^1194^2^3^CEL
COHAOR017^AAD^CLORHIDRIC ACID^AND OTHER COMPONENTS
COHAOR017^AAC^HANDLE WITH^CARE
COHAOR018^2^2^CEL
COHAOR019^5^CEL^2^6
COHAOR020^11^70
UNZ001