

---

Container positioning for inspection

# **SANCRT**

## **SANITARY CERTIFICATE**

**<!Fòrum telemàtic>**

**GUIDELINE FOR THE EDISIMPLEX  
SANCRT MESSAGE**

**Version 1.3**

---

Message:	SANCRT
Version:	1.3
Date:	May 2009
Source:	<i>Portic Barcelona</i>

## CHANGE CONTROL

### SANCR004

Version 1.3 includes the following changes to the previous version 1.2 from January 2009:

- A new code has been included in data element 4405 of segment SANCR004 (header section, STS in EDIFACT) where UN/ECE recommendation 24 codes are used:
  - “125” No status. No status information is available. It will be used when the container has been sealed but the SCPP does not know if goods have been released or not.

Version 1.2 is the first version of this user guide.

---

<b>TABLE OF CONTENTS</b>
--------------------------

GENERAL INTRODUCTION .....	4
CHOREOGRAPHY .....	6
THE SANCRT MESSAGE .....	6
SEGMENTS.....	7
DATA SET.....	13
EXAMPLE .....	14

## GENERAL INTRODUCTION

### SCOPE OF THIS DOCUMENT

This document has been developed by the Fòrum telemàtic and covers maritime-related electronic data interchange (EDI). Specifically it provides guidance as to the recommended usage of codes, qualifiers, data elements, composites, segments and groups of segments in the D00B SANCRT message.

### UN/EDIFACT DIRECTORY REFERENCE

This document is based on the UN/EDIFACT D00B directory.

---

## STATUS INDICATORS AND USAGE INDICATORS

### Status Indicators

Status Indicators (M and C) form part of the UN/EDIFACT standard and indicate a minimum requirement to fulfil the needs of the message structure.

The Status Indicators are:-

<i>Value</i>	<i>Description</i>
M	Mandatory  This entity must appear in all messages. Shown as Usage Indicator "M" in Implementation Guidelines.
C	Conditional  This entity is used by agreement between the parties to the transaction.

A 'Conditional' Status Indicator may be represented by a supporting Usage Indicator which is either R, O, D or X (see below)

### Usage Indicators

Throughout this document reference is made to indicators (M, R, D, O and X) which are shown adjacent to data items and which dictate for the particular message or set thereof the agreed usage of the data items or entities.

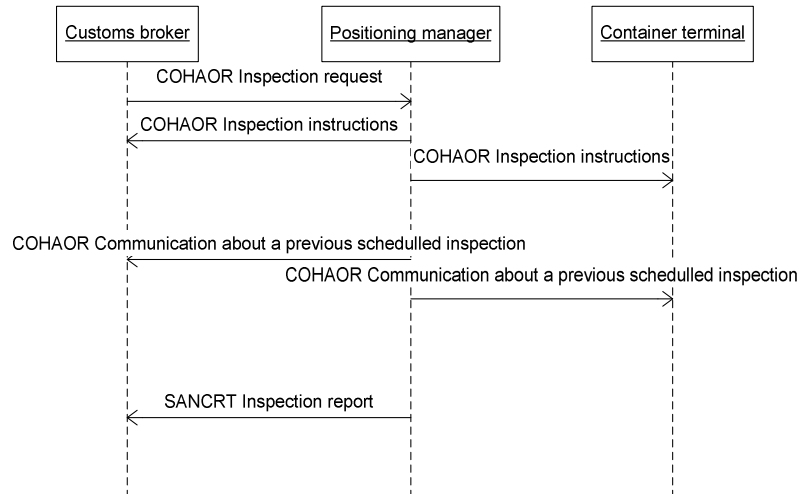
Set out below are the indicators and their respective uses:-

<i>Value</i>	<i>Description</i>
M	Mandatory  Indicates that this item is mandatory in the message.
R	Required  Indicates that this entity must be sent in this implementation.
D	Dependent  Indicates that the use of the entity depends upon a well-defined condition or set of conditions. These conditions must be clearly specified in the relevant implementation guideline.
O	Optional  Indicates that this entity is at the need or discretion of the sender of the message.
X	Not Used  Indicates that the entity is not to be used in this message implementation.

Where an element within a composite is marked “M” or “R”, but the composite has been marked “O” or “D”, this indicates that the element must always be transmitted only if the composite is used.

Implementers are advised to include the above information on Usage and Status Indicators in their Implementation Guidelines.

## CHOREOGRAPHY



## THE SANCRT MESSAGE

### FORMAL DEFINITION

*The SANCRT message permits a commercial operator to apply to a national agency for the issue of a certificate, permit, authorization etc. in respect of products to be imported or exported. It further permits the issuing authority to transmit to the applicant and to the exporting or importing country's relevant national authority, (e.g. Customs, Agriculture etc.) the details of the certificate, permit or authorization in respect of those products thus facilitating the import/export clearance of the consignment whilst ensuring that all certificate, permit, authorization requirements are met.*

## SEGMENTS

Structure of the message and correspondance with the EDIFACT segments

## HEADER SECTION

<b>ENV001</b>	<b>UNB</b>	<b>MANDATORY</b>
---------------	------------	------------------

**ENV001**^Sender ID^Receiver ID

Example: ENV001^ESA43446522^ESA61961488

- **Sender ID** Mandatory an..35

Identification of the sender of the document, coded. Composed by 2 letter country code plus the NIF of the company that sends the document. For example ESA61961488.

- **Receiver ID** Mandatory an..35

Identification of the receiver of the document, coded. Composed by 2 letter country code plus the NIF of the company receiver of the document. For example ESA61961488.

<b>SANCR001</b>	<b>UNH</b>	<b>MANDATORY</b>
-----------------	------------	------------------

**SANCR001**^MESSAGE REFERENCE NUMBER^**SANCR001**^D^00B^UN

Example: SANCR001^1^SANCR001^D^00B^UN

*The SANCR001 segment must always be sent.*

M	0062	MESSAGE REFERENCE NUMBER	M	an..14
R		Message Reference Number		

<b>SANCR002</b>	<b>BGM</b>	<b>MANDATORY</b>
-----------------	------------	------------------

**SANCR002**^293^DOCUMENT/MESSAGE NUMBER^MESSAGE FUNCTION, CODED

Example: SANCR002^293^DOC1234^9

To indicate the type and function of a message and to transmit the identifying number.

*The SANCR002 segment must always be sent.*

R	1004	DOCUMENT/MESSAGE NUMBER	C	an..35
R		Sender's Unique Internal Reference Number		
R	1225	MESSAGE FUNCTION, CODED	C	an..3
D		1 Cancellation (cancel whole message)		
D		5 Replace (replace whole message)		
D		9 Original (whole new message)		

<b>SANCR003</b>	<b>DTM</b>	<b>REQUIRED</b>
-----------------	------------	-----------------

**SANCR003^137^Date/time/period^203**

Example: SANCR003^137^200809091722^203

The DTM at this level can be used to specify dates related to the message.

*Only one occurrence of this segment is used. The document/message send date is required.*

R	2380	Date/time/period		C	an..35
R		Date/time			
R	2379	Date/time/period format	qualifier	C	an..3
R		203	CCYYMMDDHMM		

<b>SANCR004</b>	<b>STS</b>	<b>REQUIRED</b>
-----------------	------------	-----------------

**SANCR004^1^STATUS**

Example: SANCR004^1^78

To specify the status of an object or service, including its category and the reason(s) for the status.

A segment specifying status information relevant to the entire message (e.g. the status of a request or operational process relating to the certificate, permit, etc.).

*Only one occurrence of this segment must be used.*

R	C555	STATUS		C	
M	4405	Status description code		M	an..3
R		Code as per UN/ECE Recommendation 24			
		78	Released		
			The goods/consignment/equipment has been released.		
		82	Returned		
			The goods/consignment/equipment has been returned.		
		114	Delivery, accepted subject to further inspection		
			Delivery accepted subject to further inspection of the good/consignment/equipment/means of transport.		
		125	No status. No status information is available.		
			It will be used when the container has been sealed but the SCPP does not know if goods have been released or not.		

<b>SANCR005</b>	<b>RFF</b>	<b>MANDATORY</b>
-----------------	------------	------------------

**SANCR005^IIR^Reference number**

Example: SANCR005^IIR^A6196148800928737

To specify references applicable to the whole message, such as the reference to the inspection instruction message sent by the party in charge of the management of the positioning for inspection.

*Only one occurrence of this segment is used, the reference to the last message sent by the part that request the positioning for inspection.*

M	C506	REFERENCE		M	
M	1153	Reference qualifier		M	an..3
R		[IIR]	Inspection request		
			Reference to a previous inspection request message. In the data element 1154 of this segment, it must appear the document/message number (DE1004 in segment COHAOR002 of the current inspection request message).		

R	1154	Reference number	C	an..35
R		Number		

<b>SANCR006</b>	<b>FTX</b>	<b>OPTIONAL (0..1)</b>
-----------------	------------	------------------------

**SANCR006^AEA^**Free text^[Free text]^ [Free text]^ [Free text]

Example: SANCR006^AEA^CAMBIO DE CONTENEDOR^NO ES NECESARIO UN RECONOCIMIENTO EXTRA

To provide free form or coded text information.

Code or clear text indication of the type of change with respect to the earlier sent message.

*Only one occurrence of this segment can be used.*

D	C108	TEXT LITERAL	C	
M	4440	Free text	M	an..70
M		General remarks referred to the container cargo.		

O	4440	Free text	C	an..512
O	4440	Free text	C	an..512
O	4440	Free text	C	an..512
O	4440	Free text	C	an..512

## **M** SEGMENT GROUP 1 - SANCR007 (DOC)

Group Function: A group of segments identifying documentary requirements where they are needed as supporting information for the entire message.

Group Repeats: 9

Group Status: Conditional

Group Usage: Dependent

Clarification: A group of segments identifying documents related to the message, such as the request for permit sent to the Border Inspection Services.

<b>SANCR007</b>	<b>DOC</b>	<b>MANDATORY</b>
-----------------	------------	------------------

**SANCR007^**Document name code^Document identifier

Example: SANCR007^840^SOIV488467738939

To identify documents and details directly related to it.

A segment identifying a specific document required as supporting information for the entire message.

*When group 1 is used, the SANCR007 segment must always be sent.*

M	C002	DOCUMENT/MESSAGE NAME	M	
R	1001	Document name code	C	an..3

*It has to be declared the regulatory body that has requested the physical inspection (it could be more than one). They have to be the same than those declared at the previous COHAOR message.*

[Z05] Customs

Customs authorities.

[Z20] Sanidad Vegetal – Phytosanitary

Government agency responsible for the inspection of

*vegetable substances being imported.*

[Z21] *Sanidad Animal - Veterinary*

Government agency responsible for the for the importation of live animals and for the inspection of animal food.

[Z22] *Sanidad Exterior – animal products*

Government agency responsible for public health matters. Animal products.

[Z23] *Sanidad Exterior – vegetal products*

Government agency responsible for public health matters. Vegetal products.

[Z24] *Farmacia - Pharmacy*

[Z25] *SOIVRE – Quality controls*

[Z26] *SOIVRE – CITES*

[Z27] *SOIVRE – Safety controls*

[Z28] *Vigilancia aduanera*

[Z29] *Guardia Civil*

[Z30] *ARB – Risk analysis team from Barcelona*

[Z31] *IPDI-Import designated points (Puntos designados de importación)*

[Z99] *Other*

R C503 DOCUMENT/MESSAGE DETAILS C

R 1004 Document identifier C an..35

*It must be the same document numbers than those declared in the previous COHAOR message.*

*If DE1153 is "Z05", "Z28", "Z29" or "Z30" it must be declared the*

*Customs declaration number.*

*If DE1153 is "Z25", "Z26" or "Z27" it must be declared the number of the request for commercial quality controls (SOIVRE).*

*If DE1153 is "Z22", "Z23" or "Z31", it must be declared the number of the request for public health safety controls (Sanidad Exterior).*

*If DE1153 is "Z21", it must be declared the number of the request for animal health safety controls (Sanidad Animal).*

*If DE1153 is "Z20", it must be declared the number of the request for phytosanitary controls (Sanidad Vegetal).*

*If DE1153 is "Z24", it must be declared the number of the request for pharmaceutical controls (Farmacia).*

## **R SEGMENT GROUP 6 - SANCRT008, GROUP7 (EQD, GROUP7)**

Group Function: A group to specify the containers to be released.

Group Repeats: 1

Group Status: Conditional

Group Usage: Required

Clarification: Group 6 must always be transmitted.  
*Only one occurrence of group 6 must be used.*

**SANCRT008**

**EQD**

**MANDATORY**

**SANCRT008^CN^**Equipment identification number^Equipment size and type identification

Example: SANCRT008^CN^RRRU1234560^45R1

To specify container or equipment details.

*The SANCRT008 segment must always be sent.*

D C237 EQUIPMENT IDENTIFICATION C

R	8260	Equipment	identification number	C an..17
R			<i>Equipment Number</i>	
			<i>Container numbers must include both prefix and number, expressed as a contiguous string without spaces or hyphens.</i>	
D	C224	EQUIPMENT	SIZE AND TYPE	C
R	8155	Equipment	size and type identification	C an..10
R			<i>Equipment Size and type</i>	
			<i>Container size and type according to ISO6346 codes.</i>	

## R SEGMENT GROUP 7 - SANCRT009, SANCRT010 (SEL, DTM)

Group Function: A group of segments identifying seals applied a unit of equipment used to transport the product covered by the entire message.

Group Repeats: 1

Group Status: Conditional

Group Usage: Required

Clarification: Group 7 must always be transmitted, and only one repetition will be permitted

### SANCRT009

### SEL

### MANDATORY

**SANCRT009**<sup>A</sup>SEAL IDENTIFIER<sup>^</sup>[Sealing party name code<sup>^</sup>[Sealing party name]]<sup>^</sup>[SEAL CONDITION CODE]

Example: SANCRT009<sup>^</sup>NL5694359<sup>^</sup>CA<sup>^</sup>MAERSK SEALAND<sup>^</sup>1

A segment identifying a seal and the seal issuer for the unit of equipment.

*The SANCRT009 segment must always be sent.*

R	9308	SEAL IDENTIFIER		C an..35
			<i>Seal number</i>	
O	C215	SEAL ISSUER		C
R	9303	Sealing party name code	C an..3	
		<i>AA Consolidator</i>		
		<i>AB Unknown</i>		
		<i>AC Quarantine agency</i>		
		<i>CA Carrier</i>		
		<i>CU Customs</i>		
		<i>SH Shipper</i>		
		<i>TO Terminal operator</i>		
O	9302	Sealing party name		C an..35
		<i>Sealing party name (free text)</i>		
O	4517	SEAL CONDITION CODE		C an..3
		<i>1 In right condition</i>		
		<i>2 Damaged</i>		

### SANCRT010

### DTM

### OPTIONAL

**SANCRT010**<sup>^</sup>78<sup>^</sup>Date/time/period<sup>^</sup>203

Example: SANCRT010<sup>^</sup>78<sup>^</sup>200803021152<sup>^</sup>203

A segment identifying a date relevant to the sealing of the unit of equipment

*Only one occurrence of this segment can be used.*

R	2380	Date/time/period		C an..35
R			<i>Date/time/period</i>	

---

R	2379	Date/time/period	format	qualifier	C	an..3
R		203	CCYYMMDDHHMM			

<b>UNZ001</b>	<b>UNZ</b>	<b>MANDATORY</b>
---------------	------------	------------------

**UNZ001**

End of message

**DATA SET**

Data interchanged in this message:

Data item	Group	Segment	Element		Inspection reportt
Message date/time	Header	DTM	C507/2005	"137"	R
	Header	DTM	C507/2380	Message date/time CCYYMMDDHHMM	R
	Header	DTM	C507/2379	"203"	R
Status: Released	Header	STS	C601/9015	"1"	D
	Header	STS	C555/4405	"78"	D
Status: Returned	Header	STS	C601/9015	"1"	D
	Header	STS	C555/4405	"82"	D
Status: Delivery, accepted subject to further inspection	Header	STS	C601/9015	"1"	D
	Header	STS	C555/4405	"114"	D
Reference to the current request for positioning message	Header	RFF	C506/1153	"IIR"	R
	Header	RFF	C506/1154	Ref. previous message	R
Cargo remarks	Header	FTX	4451	"AEA"	O
	Header	FTX	C107/4441	Not used	O
	Header	FTX	C108/4440	General remarks	O
Application for goods control certificate (SOIVRE)	1	DOC	C002/1001	"840"	D
	1	DOC	C503/1004	Document number	D
Application for sanitary certificate (Sanidad Exterior)	1	DOC	C002/1001	"847"	
	1	DOC	C503/1004	Document number	D
Application for veerinary certificate (Sanidad Animal)	1	DOC	C002/1001	"848"	D
	1	DOC	C503/1004	Document number	D
Application for phytosanitary certificate (Sanidad Vegetal)	1	DOC	C002/1001	"850"	D
	1	DOC	C503/1004	Document number	D
Application for inspection certificate (Otros, sin especificar)	1	DOC	C002/1001	"855"	D
	1	DOC	C503/1004	Document number	D
Equipment number	6	EQD	8053	"CN"	R
	6	EQD	C237/8260	Equipment number	R
	6	EQD	C224/8155	Equipment size/type ISO6346	R
Seal number	7	SEL	9308	Seal number	R
	7	SEL	C215/9303	Sealing party, coded	R
	7	SEL	C215/9302	Sealing party name	O
	7	SEL	4517	Seal condition, code	O
Event date/time, actual	4	DTM	C507/2005	"78"	R
	4	DTM	C507/2380	Event date/time CCYYMMDDHHMM	R
	4	DTM	C507/2379	"203"	R

**EXAMPLE**

ENV001^ESA43446522^ESA61961488  
SANCRT001^1^SANCRT^D^00B^UN  
SANCRT002^293^DOC1234^9  
SANCRT003^137^200809091722^203  
SANCRT004^1^78  
SANCRT005^IIR^A6196148800928737  
SANCRT006^AEA^CAMBIO DE CONTENEDOR^NO ES NECESARIO UN RECONOCIMIENTO EXTRA  
SANCRT007^840^SOIV488467738939  
SANCRT007^850^VEGE88499337100  
SANCRT008^CN^RRRU1234560^45R1  
SANCRT009^NL5694359^CA^MAERSK SEALAND^1  
SANCRT010^78^200803021152^203  
UNZ001